



Industrial & Commercial Heating Controls

heatmiser
Effective Temperature Control



Industrial & Commercial

For more information or to order
call **+44 (0)1254 776343**

heatmiser
Effective Temperature Control

Heatmiser features at a glance

Warm Air & Radiant Features						
Features	Economy 2000	Economy 2000L	Economy	Eclipse	Mistral 1	Mistral 2
Self Learning Optimisation	Yes	Yes	Yes	Yes	Yes	Yes
On/Off Heater Control	Yes	Yes	Yes	Yes	Yes	Yes
High/Low Heat Control	No	No	No	No	Yes	Yes
0-10v Modulation	No	No	No	No	No	Yes
Number of Zones	1	1	1	1	1	1
2 Temperature Settings	Yes	Yes	Yes	Yes	Yes	Yes
Number of switching periods per day	3	3	3	3	3	3
Frost Protection	Yes	Yes	Yes	Yes	Yes	Yes
Sensor Inputs	0	0	2	2	2	2
Digital Switching Relays	2	3	2	1	5	5
Digital Voltage Free Inputs	0	0	2	2	2	2
Security Coding	Yes	Yes	Yes	Yes	Yes	Yes
Program Safe on Power Failure	Yes-10 yrs	Yes-10 yrs	Yes-10 yrs	Yes-10 yrs	Yes-10 yrs	Yes-10 yrs
Back-Lit LCD (no. of characters)	16*2	16*2	16*2	16*2	16*2	16*2
Average Temperature	No	No	Yes	Yes	Yes	Yes
Summer Fan Control	Yes	Yes	Yes	No	Yes	Yes
Constant Fan Control	Yes	Yes	Yes	No	Yes	Yes
Purge Facility	No	No	No	No	Yes	Yes
Monitoring	No	No	Yes	Yes	Yes	Yes
Remote Override Switch	No	No	Yes	Yes	Yes	Yes
Safety Proving Switch	No	No	No	Yes	Yes	Yes
PC Connection	No	No	Yes	Yes	Yes	Yes
Service Mode	Yes	Yes	Yes	Yes	Yes	Yes
Holiday Mode	No	No	Yes	Yes	Yes	Yes
Override Facility	Yes	Yes	Yes	Yes	Yes	Yes
12v Supply for Low Voltage Wiring	No	No	Yes	No	Yes	Yes
Heater Lockout & Reset	Yes	Yes	No	No	Yes	Yes
Remote Sensors	No	No	Yes	Yes	Yes	Yes
Built In Sensors	Yes	Yes	Yes	Yes	Yes	Yes
Language Selection	Yes	Yes	Yes	Yes	Yes	Yes
Heater Service Warning	Yes	Yes	Yes	Yes	Yes	Yes

Boiler Control Features			
Features	Boilerman	Senior	Plus
Self Learning Optimisation	Yes	Yes	Yes
Number of Compensated Zones	0	1	3
No of Boiler Sequencing	0	0	6
Maximum Number of Zones	1	4	9
No of 7 Day Time Clock	1	4	9
Amount of Switching per day	3	4	4
Frost Protection	Yes	Yes	Yes
Sensor Inputs	2	5	10
Digital Switching Relays	2	5	10
Digital Voltage Free Inputs	2	5	10
Pump Overrun	Yes	Yes	Yes
Zone Titrting	No	Yes	Yes
PC Connection	No	Yes	Yes
Back-Lit Display	Yes	Yes	Yes
Security Coding	Yes	Yes	Yes
Program Safe on Power Failure	Yes-10 yrs	Yes-10 yrs	Yes-10 yrs
Size of Display	16*2	320*240	320*240
Average Temperature	Yes	No	Yes
Hot Water Boost Facility	No	Yes	Yes
Monitoring	No	Yes	Yes
Remote Override Switch	Yes	Yes	Yes
Remote Summer Switch	Yes	Yes	Yes
Holiday Periods	Yes	Yes	Yes
Modulation of Valves	No	Yes	Yes
External Temp Shut down	No	Yes	Yes
12v Supply for Low Voltage Wiring	No	Yes	Yes
GMT Correction	No	Yes	Yes
Override Facility	Yes	Yes	Yes

Radiant & Warm Air (Built in Sensor)



Our Economy 2000 series feature built-in sensors and therefore offer the most cost effective method of controlling a single zone of radiant or warm air heating - ideal when the control will be installed within the heated area.

7 Day Programming - Program 3 switching times for each day of the week.

Self Learning Optimisation - A system where the control automatically calculates the turn on time to ensure the building is up to temperature for the programmed time.

Override Facility - Quickly and easily override the programmed switching time without the need to re-program the entire system.

Built-In Sensor - These models include built in sensor, therefore removing the need to wire to a remote sensor.

Security Coding - Prevent unauthorised tampering of the Heatmiser program settings.

Frost Protection - Built in frost protection facility protects the fabric of the building.

Language Select - Select between English, French, German, Italian or Dutch.

Multiple Fan Operation - Three modes of fan operation can be selected. Summer fan, where the fan output is activated above the set temperature. Constant fan, where the fan is activated constantly throughout the programmed time. Manual, where the user can operate the fan manually using the fan button.



heatmiser Economy 2000

Heatmiser Economy 2000 is our low cost self learning optimiser designed for warm air and radiant heating applications. It is the ideal choice when simple on / off control of the heater is required.



heatmiser Economy 2000L

The Heatmiser Economy 2000L is identical to the 2000 but also includes heater lockout and reset facility for use on heaters with electronic ignition. A 240v signal can be wired in to the Economy 2000L. On receipt of a fault indication, a warning message is displayed on-screen. On rectification of the fault, the Economy 2000L can send a reset signal which clears the lockout status.

Radiant & Warm Air (Remote Sensing)



These products offer remote sensing facility, and so are ideal when the control will be installed away from the heated area.

Optimisation - A system where the control automatically calculates the turn on time to ensure the building is up to temperature for the programmed time.

Holiday Facility - 5 holiday periods can be programmed on these products. During this time, the night set back temperature will be maintained.

Sensing - These products include built in sensors, but also allow for remote sensors to be connected. Temperature averaging between any two sensors is possible.

Frost Protection - Built in frost protection facility protects the fabric of the building.

PC Connection - These products are compatible with our PC Connect program (See page 4 for details).

Security Coding - Prevent unauthorised tampering of the Heatmiser program settings.

Multiple Fan Operation - Three modes of fan operation can be selected. Summer fan, where the fan output is

activated above the set temperature. Constant fan, where the fan is activated constantly throughout the programmed time. Manual, where the user can operate the fan manually using the fan button.

Monitoring - These products record the temperature, relay status and hours run for the previous 12 months.

Language Select - Select between English, French, German, Italian or Dutch.

heatmiser Eclipse

The Heatmiser Eclipse has been designed specifically for radiant heating and is therefore supplied with a remote radiant sensor. The Heatmiser Eclipse is the ideal choice when a simple mains output is required. On/Off control is provided on this model.



heatmiser Mistral 1

The Heatmiser Mistral is ideal for either radiant or warm air applications. Additional features for radiant heating systems include pre and post purge and proving switch. The Heatmiser Mistral offers two types of control, on/off or two stage (high/low) control.



heatmiser Economy

The Heatmiser Economy has been designed for warm air heater applications and is therefore supplied with a remote air sensor. The Economy gives the option of wiring out to the heaters in mains or low voltage. On/Off control is provided on this model as well as Heater lockout & Reset.



heatmiser Mistral 2

The Heatmiser Mistral is our most comprehensive single zone optimiser. The Mistral 2 has a third control type, 0-10v modulation. The modulating band can be adjusted from 1°C-10°C. This control is capable of controlling any radiant or warm air system.



PC Connect Features



PC Connect is our Windows based program allowing you to take control of your heating from your PC. Easily view and amend the heating settings for your entire heating system.

Temperature View - See at a glance the actual and set temperature for each heating zone throughout your building.

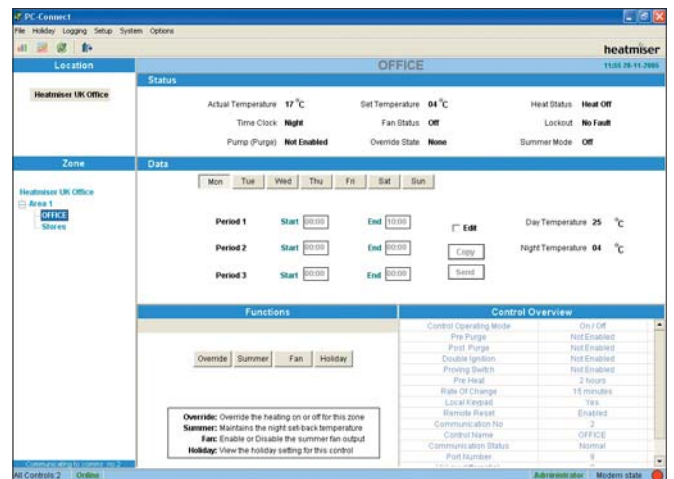
Complete Programming from your PC - The PC Connect program allows you to program the heating controls on your network quickly and easily.

Monitoring - PC Connect can retrieve and display Hours Run and Temperature/Burner history from each control on the network. This data can be exported and used to create your own reports in Excel or similar.

Holiday - Program individual holiday periods for each control on the network, or program group holidays for those zones which have the same holidays.

Copy Day - PC Connect allows you to copy times from one day to the next - making programming very simple and fast.

Network Copy - Simply select the control to copy, and then select the control or multiple controls to receive the data.

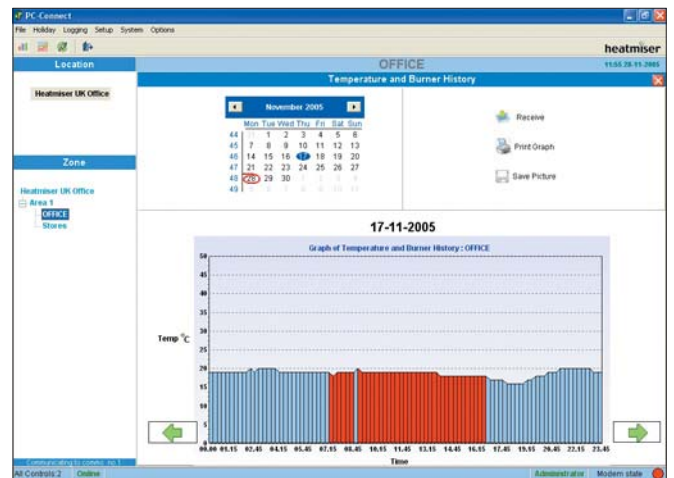


View a specific control in detail, with the ability to amend settings easily.

Methods of Connectivity

Direct - For those wishing to connect to a PC within the same building, direct connection is the method to use. We suggest the use of our Jara 2201D USB adaptor.

Ethernet - For those wishing to connect over a local area network or the internet, you should select our ethernet adaptor (Part NC601).



Receive and view temperature history from any control on the network.

Direct Connection		Ethernet Connection	
Adaptor Type	Max Number of Stats	Adaptor Type	Max Number of Stats
USB	32	Ethernet 1 Port	32
PCI 2 Port	64	Ethernet 2 Port	64
PCI 3 Port	96	Ethernet 3 Port	96
PCI 4 Port	128	Ethernet 4 Port	128



Jara 2201D USB Adaptor



Single Port Ethernet Adaptor (NC601)

Compatibility

PC Connect is compatible with the Heatmiser Eclipse, Economy, Boilerman, Mistral 1, Mistral 2.

Single & Multi Zone Boiler Systems



Our range of boiler controls have been designed to cater for single and multi boiler installations. Optimisation is standard on all models whilst compensation is available on the Heatmiser Senior and Plus. In addition, the Heatmiser Plus can sequence up to 6 boilers for maximum energy saving.

Optimisation - A system where the control automatically calculates the turn on time to ensure the building is up to temperature for the programmed time.

Boiler Interlock - This software feature only allows the boiler to run when there is a demand from any zone. This prevents free running of the boiler.

Security Coding - Prevent unauthorised tampering of the Heatmiser program settings.

Override Facility - Easily override the heating without the need to re-program the entire system.

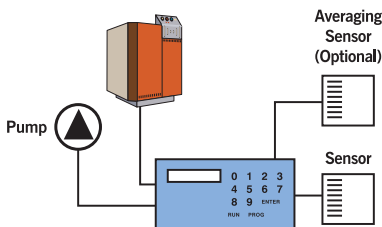
Boiler Sequencing - The Heatmiser Plus offers sequencing of up to 6 boilers, ideal for larger installations.

Compensation - The Heatmiser Senior and Plus offer weather compensation, a system which is designed to adjust the boiler flow temperature by monitoring the outside temperature.



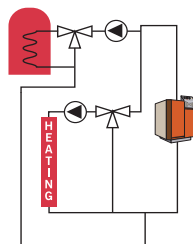
heatmiser Boilerman

The Heatmiser Boilerman is a self learning single zone optimiser with pump overrun facility and is ideal for heating only systems where total control of the boiler is required. The pump overrun dissipates the heat from the boiler and eliminates overheating problems.



heatmiser Senior

The Heatmiser Senior is a multi purpose unit with four timeclocks and five sensor inputs allowing it to be used in a variety of applications. For example it can be used to control four separate zones with different time and temperature requirements or a single fully optimised and compensated boiler system.

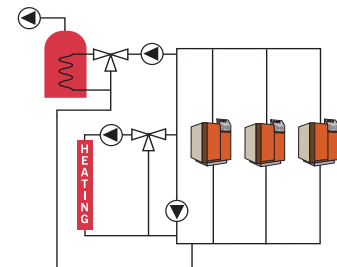


Heatmiser Senior Example System
1 Boiler, 1 Compensated Circuit,
1 Timed Output for Hot Water



heatmiser Plus

The Heatmiser Plus is our top of the range model offering 5 different control modes. These modes are Boiler Sequencer, Optimiser, Compensator, Vent and Timer. During the configuration process the installer can select from these control modes according to the application. There are 10 switching relays and 10 digital sensor inputs available.



Heatmiser Plus Example System
3 Boiler Sequencer, 1 Compensated Circuit,
1 Time and Temperature zone for Hot Water,
1 Secondary Pump Timed Output

Heatmiser Plusnet



Plusnet provides PC control of our Heatmiser Senior & Plus Boiler controls. As well as being able to connect via USB, you can also connect the Heatmiser Senior & Plus to a local area network allowing you to control the entire heating system from any PC on the network.

Adjust Switching Times - Easily adjust the switching time settings on each Heatmiser control and copy the data between zones.

Override - The override function provides a quick and easy method of overriding the heating in a particular zone. This function allows you to set a desired temperature and override duration, ideal for unscheduled operation of the system.

Temperature Log - The Plusnet server will log the temperature for each zone, providing an invaluable temperature profile. History data can be displayed in bar graph format or downloaded and used in Excel.

Holiday - Program individual holiday periods for each site location

Backup & Restore - Plusnet has the ability to backup the control configuration for each site.

In the event of a control error, Plusnet can restore the control configuration to its original state.

System Features

Import Control Configuration - During installation, Plusnet will automatically import the control configuration and will setup the Plusnet system accordingly.

Commissioning Form PDF - Plusnet has the ability to export a PDF commissioning form which can be used in the handover process.

Site Drawings - Create your own pipe layout drawing for each site and import them into the Plusnet system. Sensor and relay display boxes can be placed on the drawing, providing the user an entire overview of the system.

Site Locations - Create up to 200 different site locations.

Shared Database - Install the Client software on multiple Workstations and share the same database.

Logging Capability

Hours Run - 3 weeks per control.

Temperature Log - 1 Year per control.

Methods of Connectivity

Direct - For those wishing to connect to a PC with in the same building, direct connection is the method to use. We suggest the use of our Jara 2201D USB adaptor.

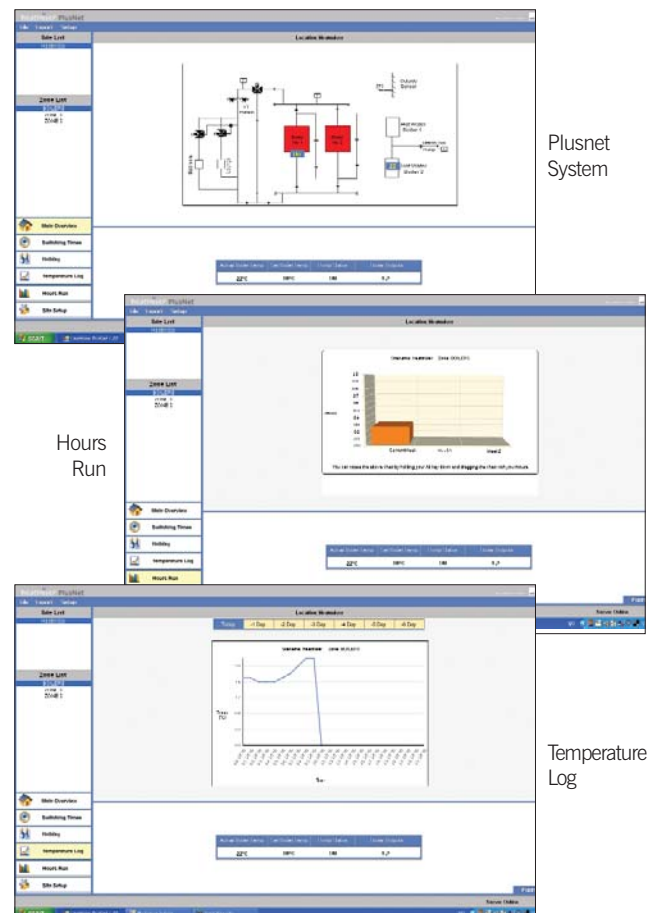
Ethernet - For those wishing to connect over a local area network or the internet, you should select our ethernet adaptor (Part NC601).



Jara 2201D
USB Adaptor



Single Port
Ethernet Adaptor
(NC601)



Sensors & Accessories



The Heatmiser Accessories include sensors, valves and our TM1 time clock, all of which are designed to compliment the other products in our range.

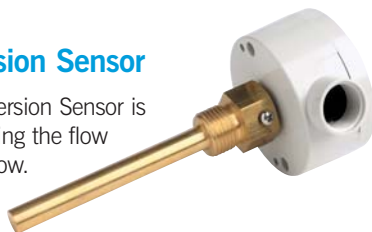
heatmiser Internal Sensor

The Heatmiser Digital Internal Sensor is used to measure the internal room temperature and has been designed with the latest electronic technology to maximise accuracy and efficiency. This sensor can be supplied as an Internal Air Sensor (white) or Internal Radiant Sensor (black).



heatmiser Immersion Sensor

The Heatmiser Digital Immersion Sensor is the ideal choice for measuring the flow temperature on the boiler flow.



heatmiser Black Bulb Sensor

The Heatmiser Digital Black Bulb Sensor is designed to measure radiant heat.



heatmiser External Sensor

The Heatmiser Digital External Sensor is designed to measure the outside temperature and is used on compensating systems.



heatmiser Clamp On Sensor

The Heatmiser Digital Clamp On Sensor has been designed for use on boiler systems which cannot be drained down and is an alternative to the Heatmiser Immersion Sensor.



heatmiser TM1

The Heatmiser TM1 has been designed to match our family of thermostats, with the same blue back light, modern stylish design and easy to use buttons. The Heatmiser TM1 Time-Clock offers three modes in-one, selectable by the installer. **Mode 1** is Countdown Timer, **Mode 2** is 5/2 Day Time Clock & **Mode 3** is 7 Day Time Clock.



Countdown Timer: In this mode, the user can select the number of hours required by using the Up/Down key. At the end of this time, the output is disabled. The installer can program a maximum countdown time to restrict excess use.

5/2 Day Time Clock: In this mode, the user can program 4 switching times for the week and 4 different switching times for the weekend.

7 Day Time Clock: In this mode, the user can program 4 switching times for each day of the week.

A 12v version of the TM1 is available (Heatmiser TM1-N). This is our network-able time-clock compatible with our Heatmiser TouchPad.

- Back-light LCD
- Timer override
- Volt free switching, Max 3A
- 230v powered

heatmiser Heatmiser In-Line Valve

This valve is designed to cut into the pipe-work leading to the radiator to give independent control of each radiator. It is intended to be used in conjunction with the UH1 Wiring Centre and low voltage network thermostats.





Ordering made simple:

Account

For trade customers, contact our sales office on 01254 776343 to enquire about opening an account.

Credit Card

We are able to accept most credit cards. No surcharge is made for this service.

Pro-forma

For those customers without an account, a pro-forma invoice can be raised.

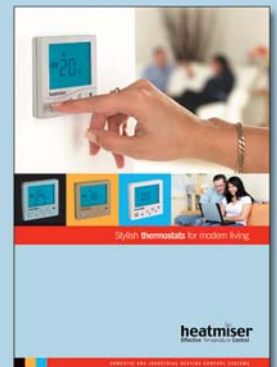
Delivery

We aim to despatch all orders received by 2:00pm the same day for delivery the next working day.



Reflecting our policy of continued research and development, we reserve the right to modify the specification of our products at any time without prior notice.

Contact us for a copy of our current domestic brochure.



Heatmiser UK Ltd
 Primrose House, Primrose Street
 Darwen, Lancashire BB3 2DE
Tel: 01254 776343
Fax: 01254 704143
Web: www.heatmiser.co.uk

Designed and produced by cdm - 01254 777752