

Heatmiser PC Connect V1.00

Setup & Operating Guide



Rev 1.0 July 2005

Contents

Contents Page	2
1. PC & Other Requirements	3
2. Installing PC Connect	4
3. USB Adaptor Setup	4
4. Ethernet Adaptor Setup	5
4.1 Mapping a Port to your Ethernet Adaptor (LAN)	7
4.2 Mapping a Port to your Ethernet Adaptor (WAN)	8
4.3 Wiring your thermostats to your Ethernet adaptor	9
5. PC Connect Main Overview	10
6. Holiday	11
6.1 Group Holiday View	12
6.2 Group Holiday Setup	13
7. Logging	14
7.1 Export Hours Run Data	14
7.2 Export Temp Burner Data	14
7.3 View Hours Run Graph	15
7.4 View Temp Burner Data	15
8. Setup	16
8.1 Network Scan	17
8.2 Modem Setup	17
8.3 Modem Option	17
9. System	18
9.1 Add Location	18
9.2 Edit Location	19
9.3 Delete Location	19
9.4 Add Zone	19
9.5 Edit Zone	19
9.6 Add Control	20
9.7 Edit Control	21
9.8 Delete Control	
9.9 Sync All Titles	
10. Options	
10.1 User Management	
10.2 Change Code	
10.3 Passcode Lock	
10.4 Passcode Delay	
10.5 System Parameters	
10.6 Offline	

Before you install PC Connect, make sure that you have the required system hardware and software.

1. PC Specifications;

- IBM or equivalent computer with a Pentium 133 MHz or higher processor running Windows 98 or higher.
- VGA or higher resolution monitor
- At least 64 MB of RAM
- At least 50 MB of free disk space on your hard disk
- CD-ROM Drive

A mouse or other pointing device supported by Windows

For Direct PC Connection

1 x USB port or 1 free PCI slot

(This method of communication should be selected when the controls to be controlled are connected directly to your PC)

For Remote Internet Connection

A broadband connection to the internet with a fixed IP address

1 spare RJ45 connection on your router

(This method of communication should be selected when you wish to control your heating over a local area network or via the internet (Note: To control your heating via the internet you will need a router with a fixed IP address accessible from the internet.)

Modem Connection

Data modem connected to a BT landline

(This method of communication should be selected when you wish to control your heating via a dial up connection) Note: The modem used on the remote PC must be recommended by Heatmiser, internal PCI modems are not compatible.

License

You can install a single-user copy of PC Connect.

2. INSTALLING PC Connect

Insert the PC Connect CD into the CD-ROM drive. The installation program should start automatically. If the installation program does not start automatically, double-click the My Computer icon on your desktop. Locate the CD-ROM drive in the window, double click the drive letter to display the contents of the CD, and then double-click SETUP.EXE

You will be prompted to enter your serial number. Your serial number is shown on your installation guide.

Note:

For those customers wishing to connect to their heating via modem or internet you should select to install the "Internet Connection Plug-in"

2.1 Auto Update:

PC Connects includes an auto update feature. When connected to the internet, the program will check for new updates and will prompt you to confirm whether you would like to download and install the update. This is the best way of ensuring your PC Connect is kept up to date.

2.2 Uninstalling PC Connect

If necessary, you can easily remove PC Connect from your computer. Select Uninstall Heatmiser PC Connect from the Heatmiser PC Connect group.

3. USB ADAPTOR SETUP GUIDE

Step 1

- Connect the USB adaptor to a free port on your PC
- When prompted for the USB driver, enter the letter of your CD Rom
For example D: The driver will now be installed from the PC Connect CD

Step 2

You now need to obtain the Port no of the USB adaptor, follow the steps below.

- Open Control Panel on your PC
- Click System
- Select Hardware (XP users only)
- Select Device Manager
- Double click Comms port
- Make a note of the new USB adaptor

Step 3

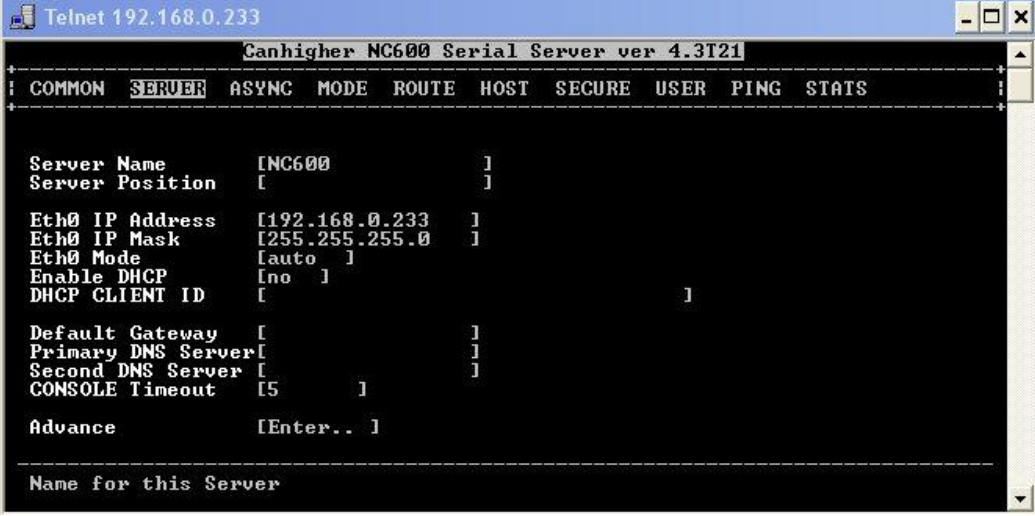
You should now connect your controls to the USB adaptor

- On your controls you have S - +
- You should daisychain all of the controls on the system
- Connect + to A on the adaptor
- Connect - to B on the adaptor
- Connect S only at the control side.

4. ETHERNET ADAPTOR SETUP GUIDE

Setting up the adaptor

- Connect the ETHERNET adaptor to your PC network using the ethernet lead provided and connect the power supply provided.
- At the RUN prompt type "telnet 192.168.0.233"
- You should see a screen like the one shown below
- Using your keypad (as this is a DOS window, the mouse will not work) highlight SERVER and press enter.



```
Telnet 192.168.0.233
Canhigher NC600 Serial Server ver 4.3T21
: COMMON  SERVER  ASYNC  MODE  ROUTE  HOST  SECURE  USER  PING  STATS
:-----:-----:-----:-----:-----:-----:-----:-----:-----:-----:
Server Name      [NC600      ]
Server Position  [              ]
Eth0 IP Address  [192.168.0.233 ]
Eth0 IP Mask     [255.255.255.0 ]
Eth0 Mode        [auto   ]
Enable DHCP      [no   ]
DHCP CLIENT ID   [              ]
Default Gateway  [              ]
Primary DNS Server [          ]
Second DNS Server [          ]
CONSOLE Timeout [5         ]
Advance          [Enter.. ]
-----:-----:-----:-----:-----:-----:-----:-----:-----:-----:
Name for this Server
```

Note for Users with a DHCP system

The Ethernet adaptor can be used on a DCHP network, but the IP address must be setup as a static address. You should contact your computer administrator for an IP address within the IP and Subnet mask range, but outside of the range assigned automatically.

Using the cursor on your keyboard, choose Yes in the setting "Enable DHCP"
You should select Common and then select to Save the configuration.
You should then select to Reboot the ethernet adaptor.

You should give the ethernet adaptor an IP in the same range as the other PCs on the network (For example 192.168.16.50)

You should give the ethernet adaptor the same subnet mask as the other PCs on the network (For example 255.255.255.0)

You should select Common and then select to Save the configuration

Local Area Network System

- For users wishing to connect to their within their own local area network only, please go to Page 7 (3.1)

Wide Area Network System (Via the internet)

- For users wishing to connect to their heating from a remote location follow the steps below;

- In order to gain access to the ethernet adaptor from outside of your network, you need to open 2 ports within your router. This will then allow data from the PC Connect program to be directed through the port and to the ethernet adaptor.

As all routers are configured differently, you should read the manual supplied with the router for assistance. Routers have different terminology for this function, some call it Port Forwarding and some call it Virtual Server.

- You should open TCP ports 960 and 961 and enter the IP address which you gave the ethernet adaptor on the previous page.

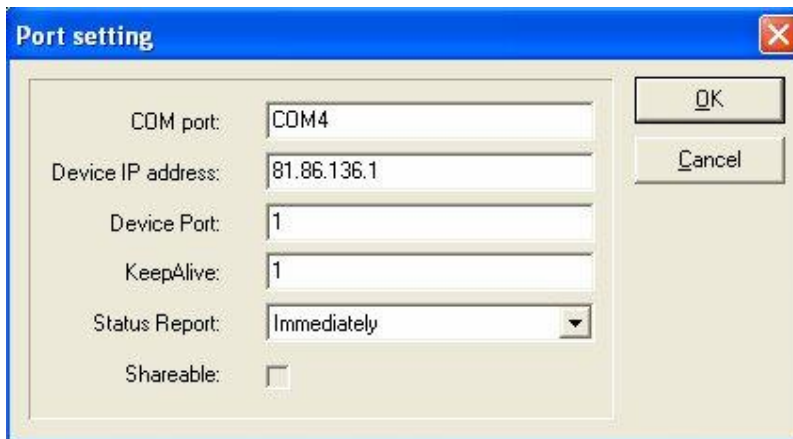
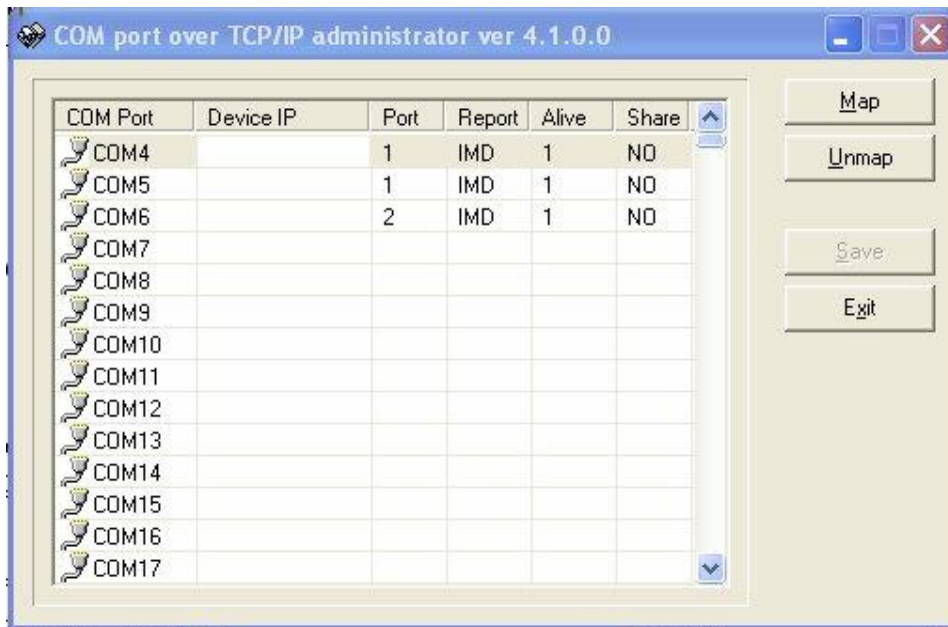
961	961	TCP	192.168.16.50
962	962	TCP	192.168.16.50

4.1 MAPPING A PORT TO YOUR ETHERNET ADAPTOR (When your controls are connected to a Local Area Network)

We now need to map a com port on your PC to the remote ethernet adaptor.

Before you proceed, you need to know the IP address of the Ethernet adaptor. You set this in Step 3.

- From Control Panel run the Com Port over TCP/IP program



- Highlight the first free comport and then press Map
- You should now enter the IP address of your Ethernet adaptor.
- Enter the port number you have connected your thermostats to on the ethernet adaptor (Most users this will be 1)
- Set KeepAlive to 1
- Select OK and then select Exit

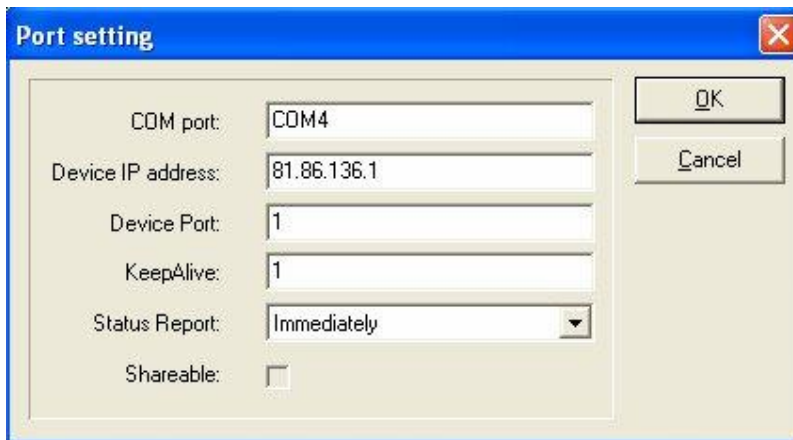
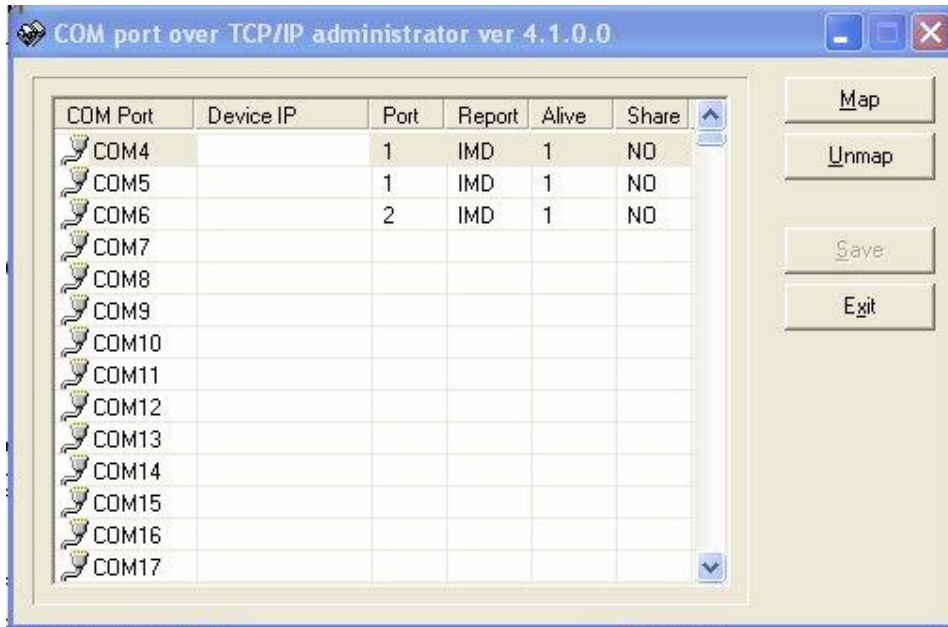
Note: You should make a note of this comm port for use later !

4.2 MAPPING A PORT TO YOUR ETHERNET ADAPTOR

(When your controls are connected to a router – for access via the internet)

Before you proceed, you need to know the fixed IP address your Internet Service Provider has provided you. If you are unsure of this you should contact them.

- From Control Panel run the Com Port over TCP/IP program



- Highlight the first free comport and then press Map
 - You should now enter the fixed IP address of your router.
 - Enter the port number you have connected your controls to on the ethernet adaptor (Most users this will be 1)
 - Set KeepAlive to 1
 - Select OK and then select Exit
- Note: You should make a note of this comm port for use later

4.3 CONNECTING THE CONTROLS

You should now connect your thermostats to the ethernet adaptor

- On your controls, you have S - +
- You should daisychain all of the controls on the system

NC602 2 port Ethernet Adaptor

- Connect + to TX+/D+ on the adaptor
- Connect - to TX- /D- on the adaptor
- Connect S on the control end only

NC601b 1 port Ethernet Adaptor

- Connect + to R+ on the adaptor
- Connect - to T-B on the adaptor
- Connect S on the control end only

NC602 Note: There is a limit to the number of controls you can connect to each port - this limit is 30. You should use port 1 first, this is identified on the adaptor as P1

You should now connect the ethernet adaptor to your router using the cable provided

You have now setup the following

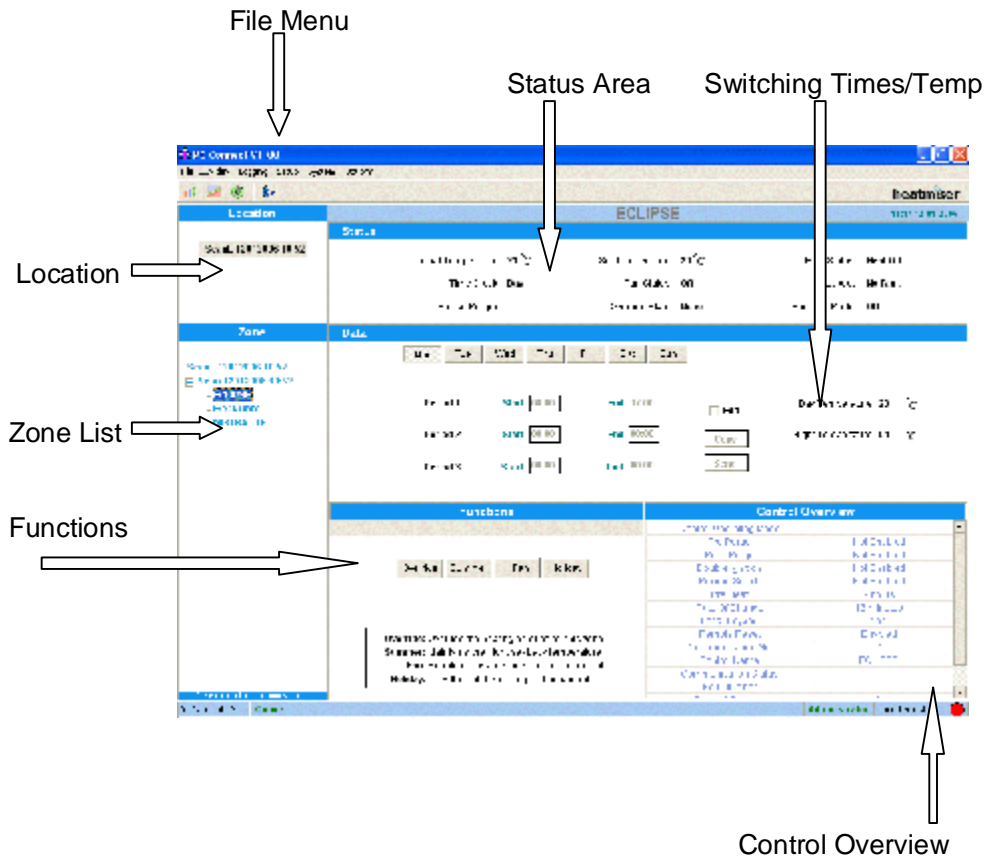
1. Set the local IP address in the ethernet adaptor.
2. Opened ports 960 & 961 on your router
3. Mapped a com port on your PC to the ethernet adaptor.
4. Wired the controls to the ethernet adaptor.

4.4 MODEM CONNECTION

To connect the controls to the modem, follow the steps below.

- On the controls you have S - +
- You should daisychain all of the thermostats on the system
- Connect + to D+/A on the modem adaptor
- Connect - to D-/B on the modem adaptor
- Connect S on the control end only

5. PC Connect Main Overview



File Menu

Exit: Exit the program

Holiday

1. Group Holiday View: Use this function to view the holidays programmed.
2. Group Holiday Setup: Use this function to program holiday periods for 1 or multiple controls on the system.

Logging

1. Export Hours Run: Use this function to export the hours run data stored.
2. Export Temp Burner: Use this function to export the burner data stored.
3. View the hours run stored as a graph on your PC.
4. View the temperature / burner history on your PC.

Setup

1. Network Scan: Use this function when first setting up your system. This function will scan any port and add the controls to the system automatically.
2. Modem Setup: Use this function to select the modem type and port used.
3. Modem Option: Use this function to select whether a "9 prefix" is required and the auto-disconnect time.

System (Manual Operation)

1. Add Location: Use this function to add a location.
2. Edit Location: Use this function to edit the location.
3. Delete Location: Use this function to delete a location
4. Add Zone: Use this function to add a zone.
5. Edit Zone: Use this function to edit a zone.
6. Delete Zone: Use this function to delete a zone.
7. Add Control: Use this function to add a control.
8. Edit Control: Use this function to edit a control.
9. Delete Control: Use this function to delete a control.
10. Sync All Titles: If you have added a control manually, you can use this function to synchronise the titles on the PC to those on the controls.

Options

User Management: Use this function to enter new users into the system. Each user can be configured as a "User" or an "Administrator"

Change Code

Use this code to change your current access code.

Passcode Lock & Passcode Delay

This function makes the system become locked after a programmed time delay.

System

This menu allows you setup System Parameters.

Offline

This function can be used to temporarily stop the PC from communicating with the controls on the network.

6. Holiday

6.1 Group Holiday View:

This function allows you to view the holidays programmed for each control on the system.

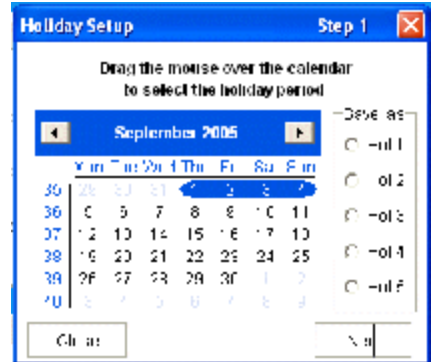
To use, simply select the control and the holiday to view.



6.2 Group Holiday Setup

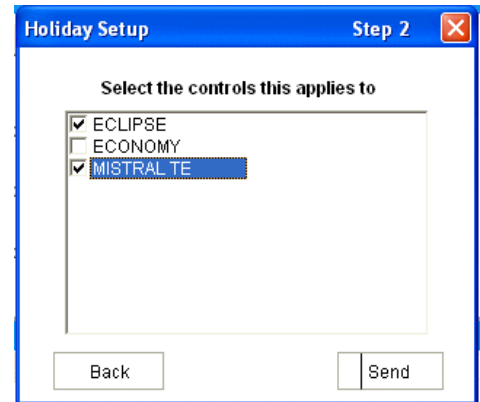
This function allows you to set holiday periods for 1 or a group of controls on the network.

- You should first drag your mouse over the dates required for the holiday. If you want the holiday to go from one month to the next, you should program 2 holidays for this.
- When you are happy with the dates set, select the holiday number to store this holiday.
- Then press Next.



6.2 Group Holiday Setup (Continued)

- You should now select which controls this holiday applies to.
- Press Send to send this holiday to the controls.



7. Logging

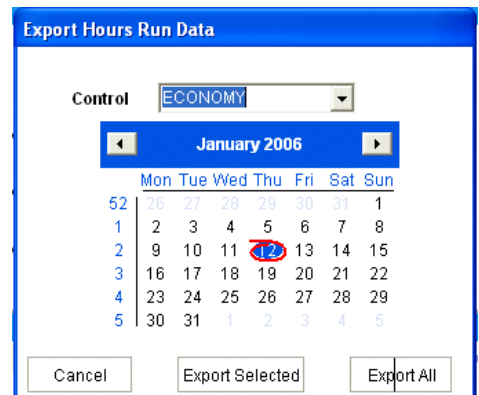
PC Connect has a "Logging facility" This feature allows you to download the logging information stored in the controls on the network. This information can then be used to locate high energy usage areas of your building.

7.1 Export Hours Run.

Use this function to export the hours run data for a selected period.

To use, drag your mouse over the dates to be exported.

PC Connect will display the path to the exported file.

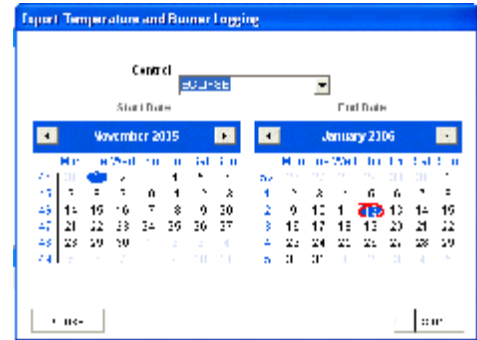


7.2 Export Temp and Burner History

Use this function to export the temperature and burner history for a selected period.

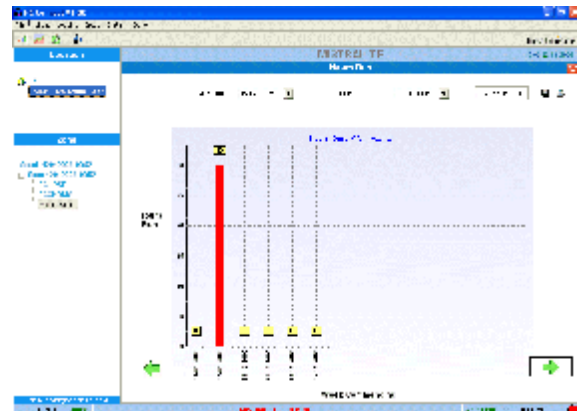
To use, select the start and end date and then press Export.

PC Connect will display the path to the exported file.



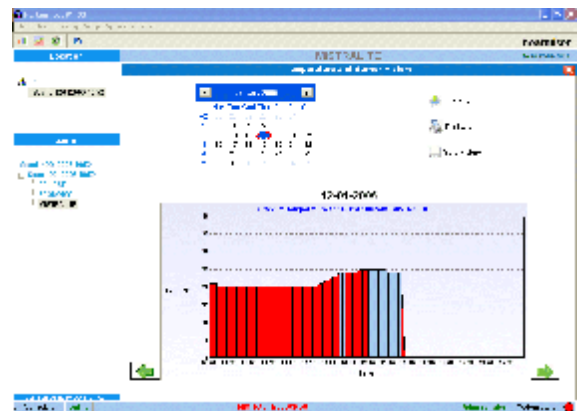
7.3 View Hours Run

- First select the control from the list
- You should then set the Start & End date.
- You should then press Receive.
- You can Save this as a BMP or Print out for future reference.



7.4 View Temperature / Burner History

- First select the control from the list.
- You should then set the Start and End date.
- You should then press Receive.
- You can Save this as a BMP or Print out for future reference.



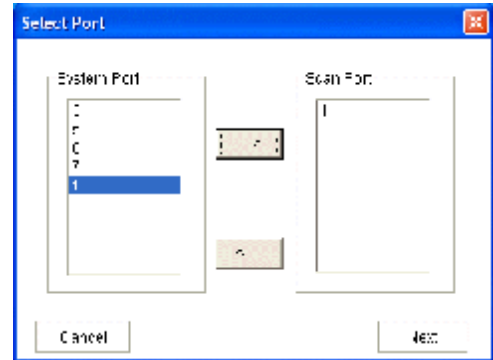
8. Setup

8.1 Network Scan

The network scan function will scan the port selected and will automatically add new controls to the system.

When you run the network scan facility, a new location and zone will be added. The location and zone title will be taken from the current time & date.

After running the network scan facility, you should use the Edit Location & Edit Zone function to rename them.



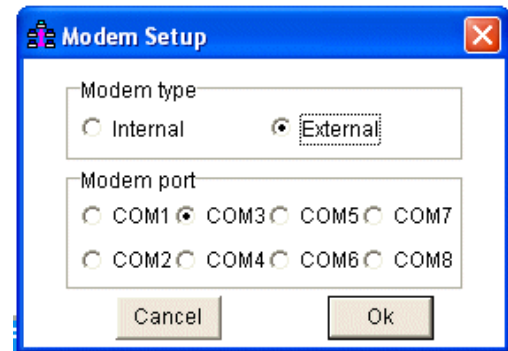
You should reboot PC Connect after running the network scan.

8.2 Modem Setup

This menu will only become available if a “dial up” connection has been setup on the system.

This function allows you to setup the type of modem and the comms port used.

You should check these settings are correct, and then press OK to store.

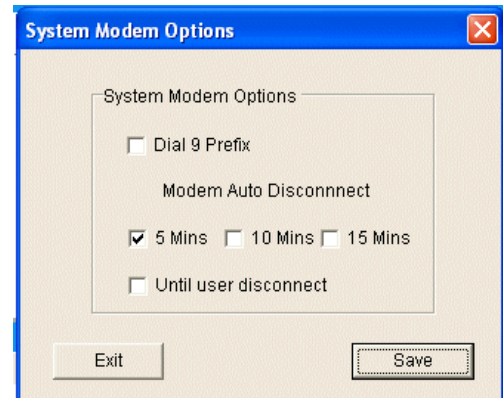


8.3 Modem Option

This menu allows you to set-up parameters to be used when a dial up connection is on the system.

9 prefix. This should be enabled if you need to dial a 9 before an outside line can be obtained.

The Auto Disconnect will ensure that the system is not left connected for long periods.



9. System

9.1 Add Location

- Here you can select the connection method for the new location to be added to the system.
- Local - USB or PCI Connection, used within the same building.
- Dial Up Connection - Modem connection, used to make a remote connection via a BT line
- Ethernet – Used to make a connection via a local area network or wide area network (WAN)



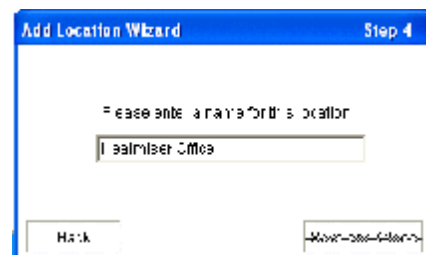
- After you have selected the connection method, you should select the comms port to be used.
- If you are not sure of the comms port, you should look in Windows Control panel for this information.



- You should now set the telephone number (only displayed if Dial Up Connection has been selected in the Connection Method)



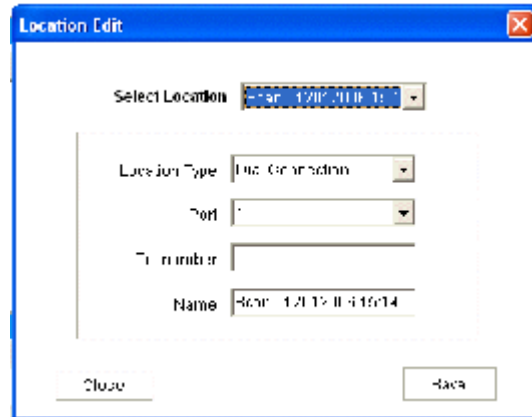
- You should now enter a name for this location.



9.2 Edit Location

Here you can alter the connection method, the port number, the telephone number (if a dial up connection) and the Location name.

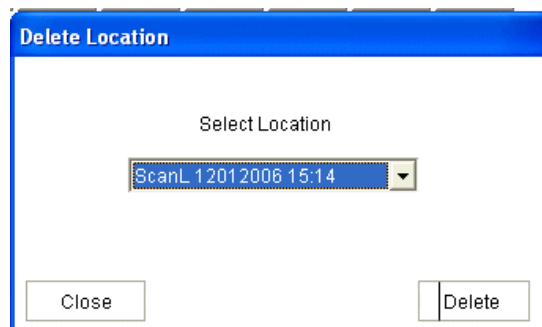
After you have changed the settings, press Save.



9.3 Delete Location

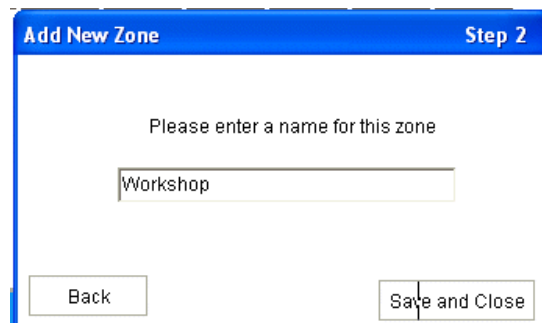
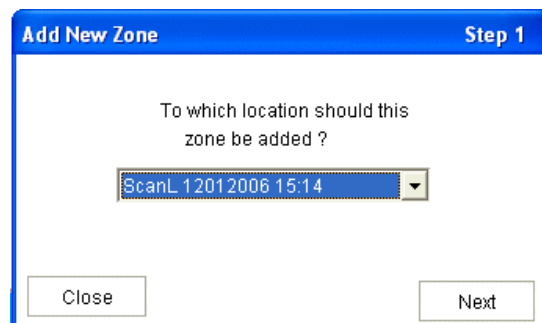
Here you can delete a location from the system.

To do this, select from the list and press Delete.



9.4 Add Zone

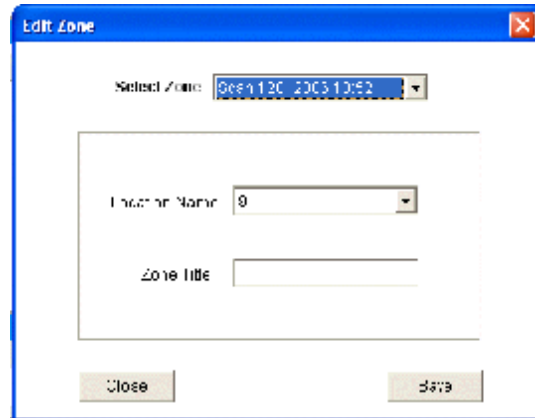
- Here you can add a zone to the system.
- You should select the location this zone will be added to.
- Then press Next.
- You should then enter the title for this zone
- Press save



9.5 Edit Zone

You can now select the zone to edit.

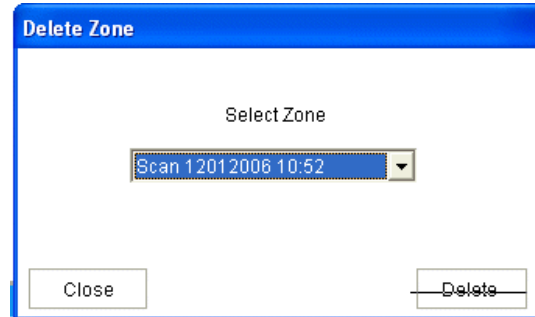
- You can now edit the Zone title.
- Press Save to store



9.6 Delete Zone

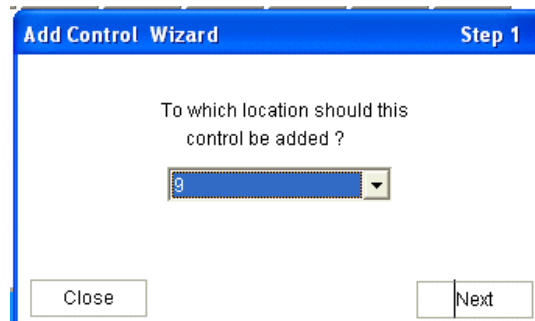
You can now select the zone to delete.

- You can now delete the zone.
- Press Delete

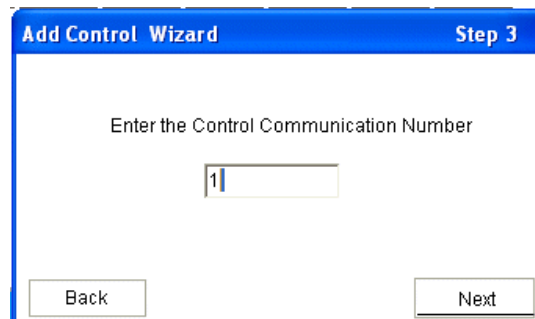


9.7 Add Control

- You can now select which location the new control should be added to.



- You should enter the communication number for this control.

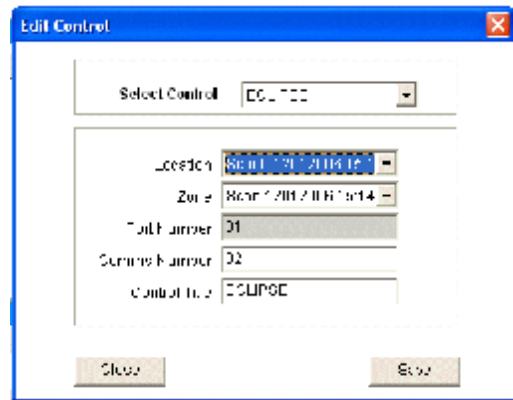


- You can now either enter the title or press Download to receive the title from the control.



9.8 Edit Control

- You should select the control first.
- Then you can set the location and the zone this control belongs to.
- Finally, you can set the control name
- Press Save



9.9 Delete Control

- You can now select the control to delete from the system.



9.10 Sync Titles

This function will receive the titles from the controls and will update the PC Connect program with these titles.

10. Options

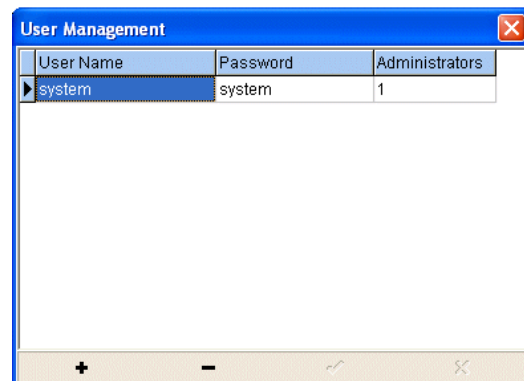
10.1 User Management

This function allows you to set-up different users in the system.

Two types of users can be set-up in the system

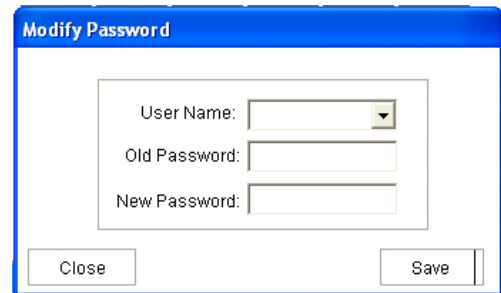
Administrators = Users set-up as administrators have full access to all of the program facilities.

Standard Users = These users do not have access to the "Setup, System and Options" menus. Also, no alteration can be made to the programmed switching times.



10.2 Change Code

Once you have logged into the system as an administrator, you are able to change the passcode.



10.3 Passcode Lock

Using this function will activate the passcode screen after the delay you have set.

10.4 Passcode Delay

Use this function to set the delay before the passcode screen will be displayed.

10.5 System Parameters

Use this function to set the font size for the location and zone menus.

10.6 Offline

Use this function to stop the PC from communicating with the controls on the network.

Heatmiser UK
Primrose House
Primrose Street
DARWEN
Lancashire
UK
BB3 2DE
www.heatmiser.co.uk
+44 1254 776343