

# Heatmiser PCLink V3

## Setup & Operating Guide



## Contents

Contents Page	2
<b>1. PC &amp; Other Requirements</b>	3
<b>2. Installing PCLink</b>	4
<b>3. USB Adaptor Setup</b>	4
<b>4. Ethernet Adaptor Setup</b>	5
4.1 Mapping a Port to your Ethernet Adaptor (LAN)	7
4.2 Mapping a Port to your Ethernet Adaptor (WAN)	8
4.3 Wiring your thermostats to your Ethernet adaptor	9
<b>5. Adding Thermostats to the System</b>	10
5.1 Renaming the Location	10
5.2 Add a Zone	10
5.3 Rename a Thermostat	11
5.4 Moving a Thermostat to another Zone	11
<b>6. PCLink Main Overview</b>	12
<b>7. History</b>	13
<b>8. Holiday</b>	14
8.1 Holiday View	15
8.2 Quick Temperature Adjust	15
<b>9. Alarm Menu</b>	16
9.1 Low Temp Alarm	16
9.2 Delete Alarm History	16
<b>10. Right Click Menu Options</b>	17
<b>11. Manual Addition to the System</b>	
11.1 Adding a new Location	17
11.2 Adding a new Zone	18
11.2. Adding New Thermostats to the System	18
12.2 Setting up the ethernet site	19
<b>13. User Management – Passcode Utility</b>	19
13.1 System Temp Limits	20
<b>14. Temporary Temperature Set Feature</b>	20
14.1 Display Status	20
14.2 Frost Mode	21
14.3 Keylock feature	21
<b>15. Programming the Heating Levels</b>	20
15.1 Programming the Hot Water Levels	22
15.2 Copy Feature	22

Before you install PCLink, make sure that you have the required system hardware and software.

### **1. PC Specifications;**

- IBM or equivalent computer with a Pentium 133 MHz or higher processor running Windows 98 or higher.
- VGA or higher resolution monitor
- At least 64 MB of RAM
- At least 50 MB of free disk space on your hard disk
- CD-ROM Drive

A mouse or other pointing device supported by Windows

#### For Direct PC Connection

1 x USB port or 1 free PCI slot

(This method of communication should be selected when the thermostats to be controlled are connected directly to your PC)

#### For Remote Internet Connection

A broadband connection to the internet with a fixed IP address

1 spare RJ45 connection on your router

(This method of communication should be selected when you wish to control your thermostats over a local area network or via the internet (Note: To control your thermostats via the internet you will need a router with a fixed IP address accessible from the internet.)

### **License**

You can install a single-user copy of PCLink on your home computer and a single-user copy on the PC used to remotely connect to your home thermostats.

## **2. INSTALLING PCLINK**

Insert the PCLink CD into the CD-ROM drive. The installation program should start automatically. If the installation program does not start automatically, double-click the My Computer icon on your desktop. Locate the CD-ROM drive in the window, double click the drive letter to display the contents of the CD, and then double-click SETUP.EXE

You will be prompted to enter your serial number. Your serial number is shown on your installation CD.

Note:

For those customers wishing to connect to their thermostats via the internet you should select to install the "Internet Connection Plug-in"

### **2.1 Uninstalling PCLink**

If necessary, you can easily remove PCLink from your computer. Select Uninstall Heatmiser PCLink from the Heatmiser PCLink group.

## **3. USB ADAPTOR SETUP GUIDE**

Step 1

- Connect the USB adaptor to a free port on your PC
- When prompted for the USB driver, enter the letter of your CD Rom  
For example D: The driver will now be installed from the PCLink CD.

Step 2

You now need to obtain the Port no of the USB adaptor, follow the steps below.

- Open Control Panel on your PC
- Click System
- Select Hardware (XP users only)
- Select Device Manager
- Double click Comms port
- Make a note of the new USB adaptor

Step 3

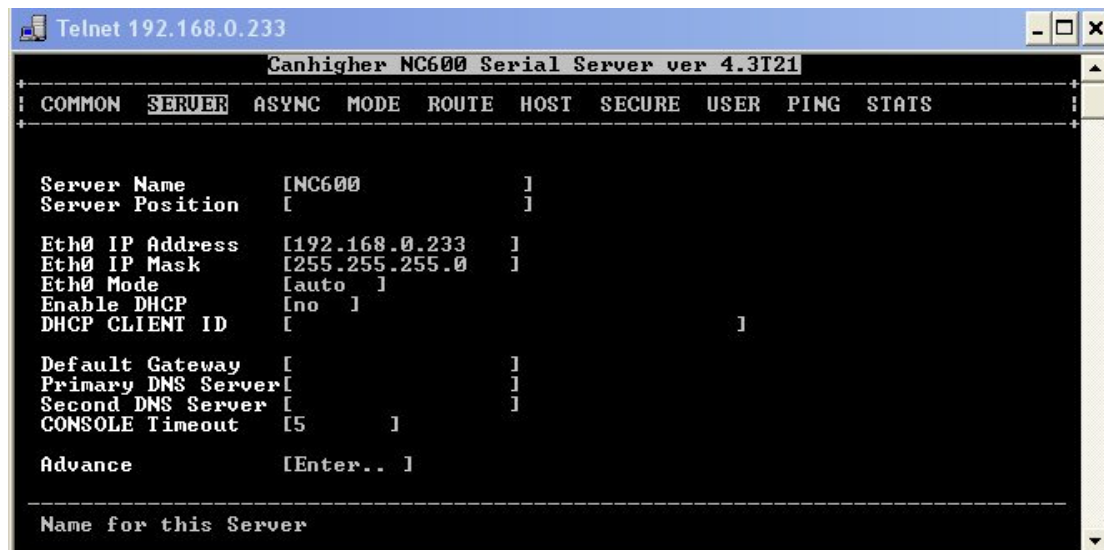
You should now connect your thermostats to the USB adaptor

- On your thermostats you have Y and B
- You should daisychain all of the thermostats on the system
- Connect Y to T+A on the adaptor
- Connect B to T-B on the adaptor

## 4. ETHERNET ADAPTOR SETUP GUIDE

Setting up the adaptor

- Connect the ETHERNET adaptor to your PC network using the ethernet lead provided and connect the power supply provided.
- At the RUN prompt type "telnet 192.168.0.233"
- You should see a screen like the one shown below
- Using your keypad (as this is a DOS window, the mouse will not work) highlight SERVER and press enter.



```
Telnet 192.168.0.233
Canhigher NC600 Serial Server ver 4.3T21
COMMON SERVER ASYNC MODE ROUTE HOST SECURE USER PING STATS
-----
Server Name      [NC600      ]
Server Position  [              ]
Eth0 IP Address  [192.168.0.233 ]
Eth0 IP Mask     [255.255.255.0 ]
Eth0 Mode        [auto      ]
Enable DHCP      [no       ]
DHCP CLIENT ID   [              ]
Default Gateway  [              ]
Primary DNS Server [            ]
Second DNS Server [            ]
CONSOLE Timeout [5         ]
Advance          [Enter..  ]
-----
Name for this Server
```

### DHCP users

Only select this if your network has a DHCP server. In this mode, the ethernet adaptor will retrieve an IP address automatically. You will need to setup the gateway and DNS settings if you will use over the internet

Using the cursor on your keyboard, choose Yes in the setting "Enable DHCP" You should select Common and then select to Save the configuration. You should then select to Reboot the ethernet adaptor.

### Non DHCP users

For those users who have assigned each PC on the network a fixed IP address, you should select this option.

You should give the ethernet adaptor an IP in the same range as the other PCs on the network (For example 192.168.16.50)

You should give the ethernet adaptor the same subnet mask as the other PCs on the network (For example 255.255.255.0)

You should select Common and then select to Save the configuration

### Local Area Network System

- For users wishing to connect to their heating thermostats within their own local area network only, please go to Page 7 (3.1)

### Wide Area Network System (Via the internet)

- For users wishing to connect to their heating thermostats from a remote location follow the steps below;
- In order to gain access to the ethernet adaptor from outside of your network, you need to open 2 ports within your router. This will then allow data from the PCLink program to be directed through the port and to the ethernet adaptor.

As all routers are configured differently, you should read the manual supplied with the router for assistance. Routers have different terminology for this function, some call it Port Forwarding and some call it Virtual Server.

- You should open TCP ports 961 and 962 and enter the IP address which you gave the ethernet adaptor on the previous page.

961	961	TCP	192.168.16.50
962	962	TCP	192.168.16.50

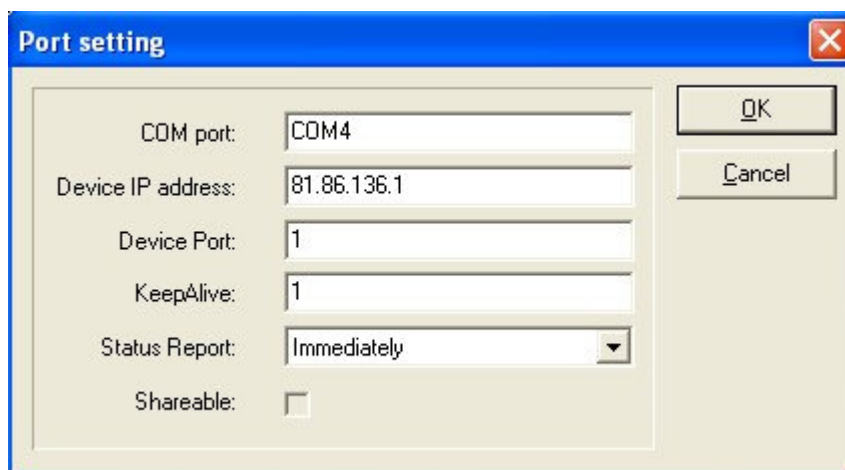
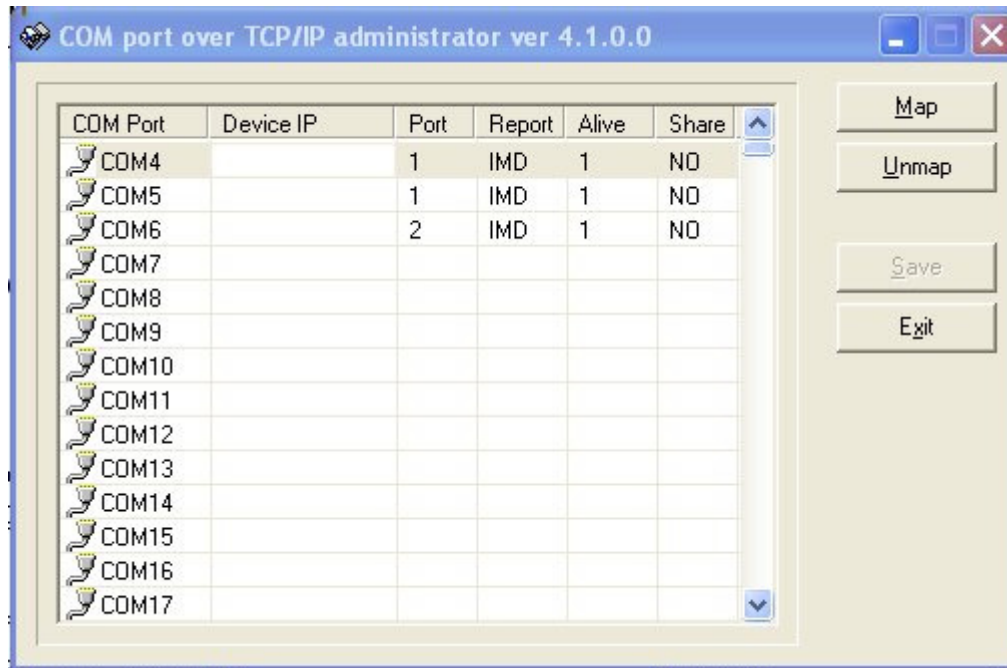
## 4.1 MAPPING A PORT TO YOUR ETHERNET ADAPTOR

(When your thermostats are connected to a Local Area Network)

We now need to map a com port on your PC to the remote ethernet adaptor.

Before you proceed, you need to know the IP address of the Ethernet adaptor. You set this in Step 3.

- From Control Panel run the Com Port over TCP/IP program



- Highlight the first free comport and then press Map
- You should now enter the IP address of your Ethernet adaptor.
- Enter the port number you have connected your thermostats to on the ethernet adaptor (Most users this will be 1)
- Set KeepAlive to 1
- Select OK and then select Exit

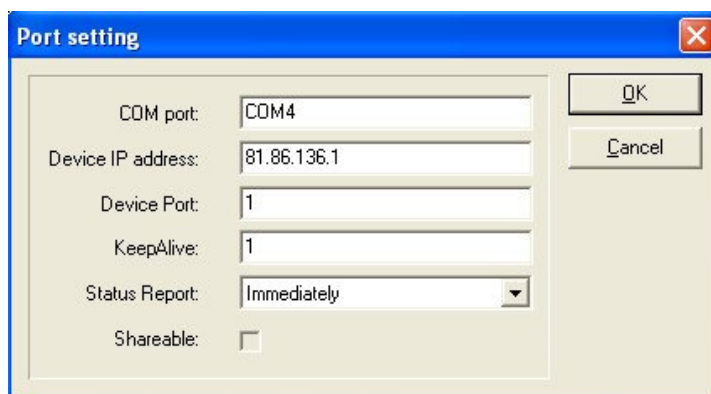
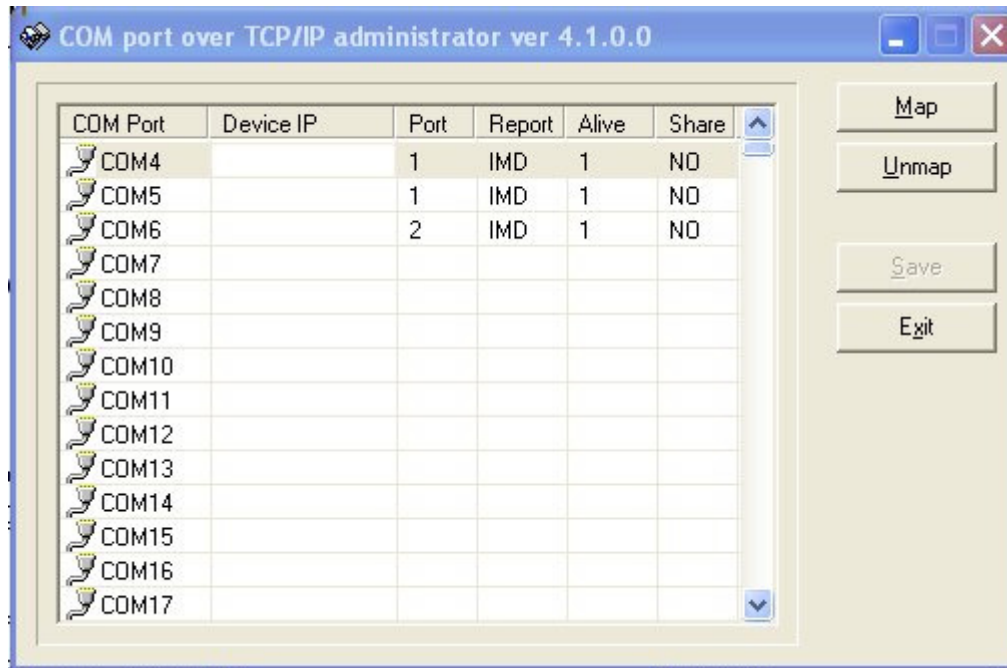
Note: You should make a note of this comm port for use later !

## 4.2 MAPPING A PORT TO YOUR ETHERNET ADAPTOR

(When your thermostats are connected to a router – for access via the internet)

Before you proceed, you need to know the fixed IP address your Internet Service Provider has provided you. If you are unsure of this you should contact them.

- From Control Panel run the Com Port over TCP/IP program



- Highlight the first free comport and then press Map
- You should now enter the fixed IP address of your router.
- Enter the port number you have connected your thermostats to on the ethernet adaptor (Most users this will be 1)
- Set KeepAlive to 1
- Select OK and then select Exit

Note: You should make a note of this comm port for use later

### 4.3 CONNECTING YOUR THERMOSTATS

You should now connect your thermostats to the ethernet adaptor

- On your thermostats you have Y and B
- You should daisychain all of the thermostats on the system
- Connect Y to R+ on the adaptor
- Connect B to T-B on the adaptor

(There is a limit to the number of stats you can connect to each port - this limit is 32) You should use port 1 first, this is identified on the adaptor as P1

You should now connect the ethernet adaptor to your router using the cable provided

You have now setup the following

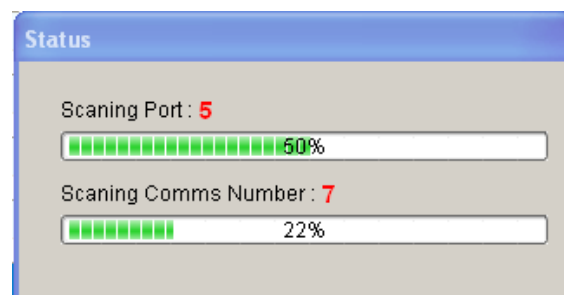
1. Set the local IP address in the ethernet adaptor.
2. Opened ports 961, 962 on your router
3. Mapped a com port on your PC to the ethernet adaptor.
4. Wired the thermostats to the ethernet adaptor.

### 5. Adding Thermostats to Your System – Network Scan

PCLink has a network scan feature which scans each port for thermostats. You should ensure that each thermostat has been assigned a unique communication address (see thermostat manual) before you run this.

You will see a dialog box like the one shown here which will indicate the Scan status. Once this has run, PCLink will indicate how many thermostats have been found on the network.

Once the scan is complete, you need to reboot PCLink in order to see the new thermostats.



### 5.1 Renaming the Location

Once you have run the Network Scan and rebooted PCLink, you will see a new Location. This will have been given a title such as “ScanL 21122006 11:46” You can rename this by following these steps;

- Click Equipment > Location / Zone Setup
- Click Modify Location
- Enter the new Location title where prompted
- Press Save

### **5.2 Add a Zone**

To add a zone, you should

- Click Equipment > Zone Setup
- Click Add Zone
- Select the Location the Zone should be added to
- Enter the title for the new Zone
- Press Save

### **5.3 Renaming the Thermostat**

Once you have renamed the Location, you will want to rename the thermostat titles. You can do this by following these steps;

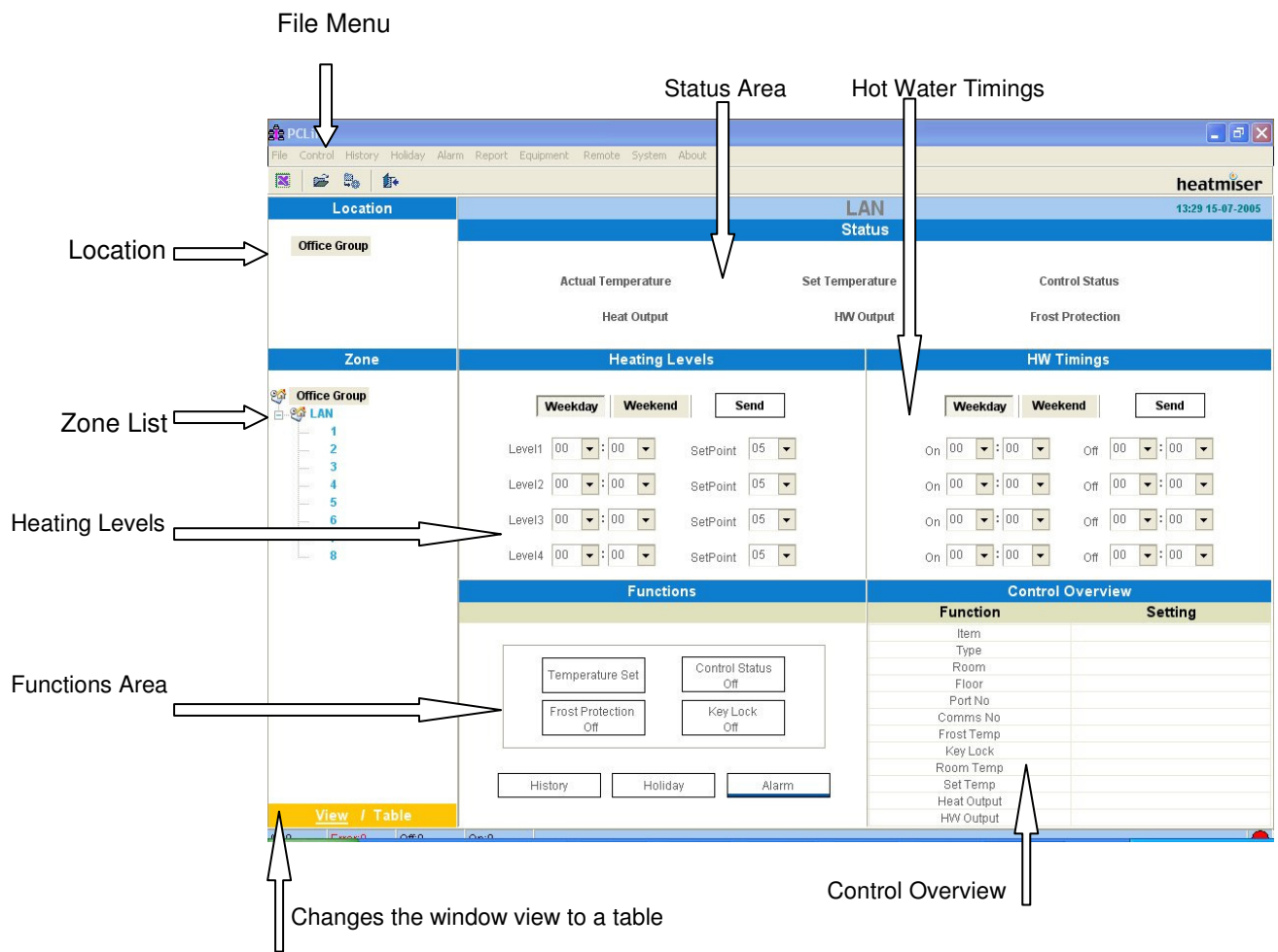
- Click Equipment > Equipment Setup
- Enter the code (Same code that was used to login to the program)
- Highlight the thermostat you want to rename, click Modify
- Then edit the details as required, making sure you select the correct Group
- Click on to another thermostat
- Press Save to store the changes
- You should reboot PCLink to see the changes

### **5.4 Moving the Thermostat to another Zone**

To move a thermostat to another zone, you should follow these steps.

- Click Equipment > Equipment Setup
- Enter the code (Same code that was used to login to the program)
- Highlight the thermostat you want to Move, and then click Modify
- Select the desired Zone in the Group field
- Click on to another thermostat
- Press Save to store the changes
- You should reboot PCLink to see the changes

## **6. PCLINK MAIN SCREEN OVERVIEW**



**File Menu**

Excel: Use this function to export the current view to Excel

Exit: Exit the program

**Control**

Turn ALL On : Use to turn the displays on all of thermostats on at this location

Turn ALL Off : Use to turn the displays off on all of thermostats off at this location

Keylock ALL: Use to lock all the buttons on all the thermostats at this location

Turn Off Keylock: Use to cancel keylock on all thermostats at this location

Enable All Frost: Places all thermostats into frost (setback mode) at this location

Turn Off Frost: Cancels frost (setback mode) at this location

System Test: Use this function to run a test on the system. An error message will be displayed if there is a communication problem.

**History**

Use the History function to set a recording interval. The temperature and heat status will be recorded, allowing you export the data in Export format.

### Holiday

Use the Holiday function to program a holiday period. During this period the thermostats will switch into frost protection mode and maintain their night setback temperature.

### Alarm

Use the Alarm function to alert you when a Low Temperature Condition has occurred.

### Equipment

This menu allows you to setup Locations and Zones on the system.

### Remote

This menu allows you to setup the remote sites.

### System

This menu allows you setup System Parameters.

## 7. History Feature

PCLink has a “History facility” This feature records the operating status of each thermostat connected to the network.

Prior to using the History feature, you should setup the recording interval.

Click “Recording Interval” and enter the recording time you require.

Click “Turn On”

PCLink must be running in order for the history to be recorded.

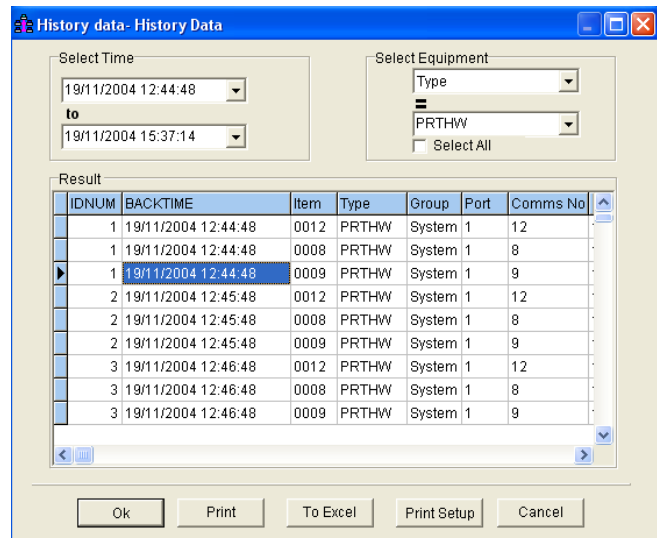
Create a Report

Click “Create Report” from the History Menu.

Select Start Time.

Select End Time.

Enter Search Criteria.



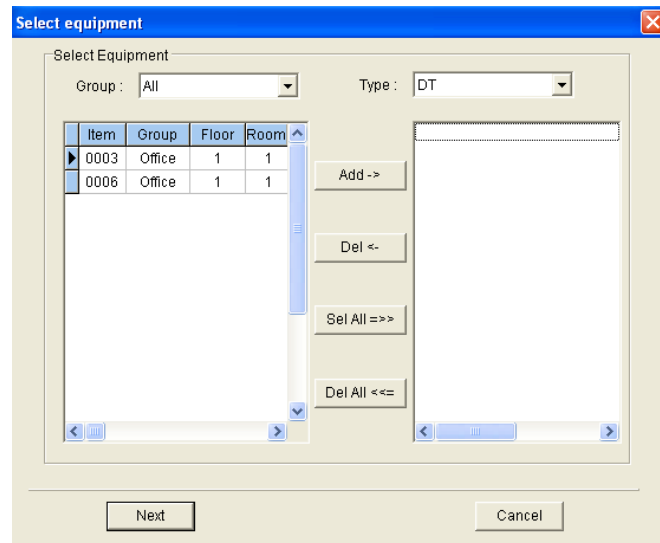
You can now select whether you wish to export to Excel or print this report for your records.

## 8. Holiday Feature

PCLink has a “Holiday facility” This feature allows you to program holiday periods for times when you know the building will be unoccupied. The thermostat will maintain the programmed frost temperature during a holiday period.

PCLink must be running in order for the holiday to operate

Holiday Setup.



Select Holiday Setup from the Holiday Menu.

To simplify the selection, choose a Group from the pull down menu.

You can then select the type of thermostat in the next pull down menu.

Highlight the stat you wish this holiday to apply to and press Add. Repeat this operation until all the thermostats that should follow this holiday period are visible in the right hand side of the screen.

When you have selected all the thermostats, press Next.

You should now enter the Start Date and the number of days the holiday should last for.

When you have selected all the thermostats, press Next.

You should now enter the Start Date and the number of days the holiday should last for.

## 8.1 Holiday View

Pressing Holiday View from the Holiday Menu allows you to quickly view the current and upcoming holiday periods.

In addition, you can easily delete a holiday whether it be a future holiday or one that is currently in operation.

Highlight the thermostat and press **-** to cancel a holiday.

Use the arrow keys to cycle through the programmed holiday settings.



## 8.2 Quick Temperature Adjust

The Quick Temperature Adjust feature allows you to easily set the same temperature on many thermostats. This is only a temporary temperature which will be maintained until the next switching level programmed in the thermostat. The thermostat will then return to its programmed setting.

In the pull down list select the type of thermostat.

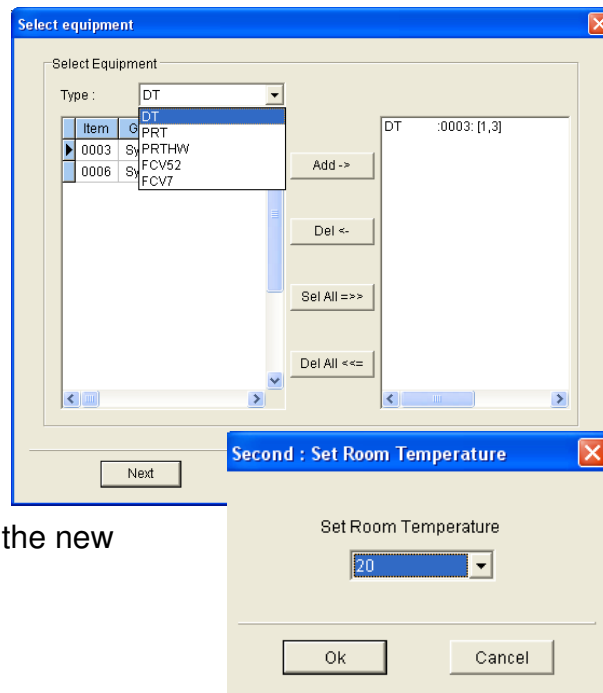
Highlight the thermostat and press Add to add it to the list. Repeat this for all thermostats that you wish this temporary setting to be applied to.

Then click Next.

You are now prompted to set the required temperature.

Once you have done this, press OK.

The thermostats will then adjust to the new temperature.



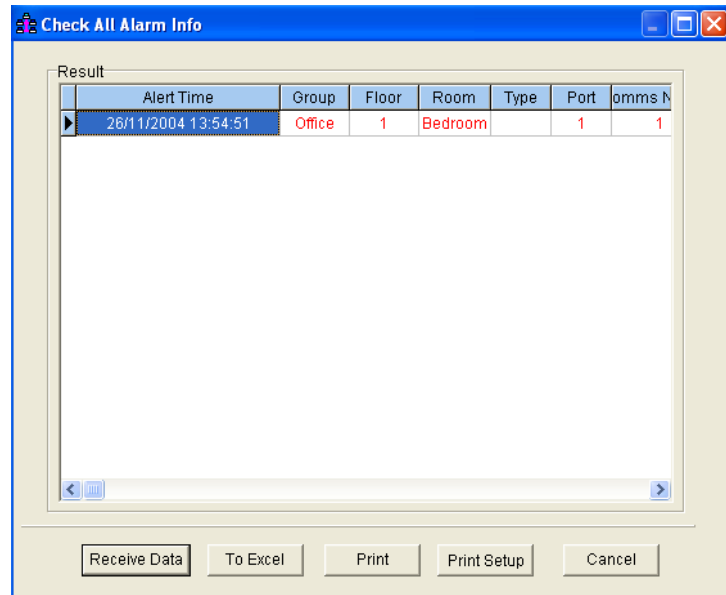
## 9. Alarm Menu

From the Alarm menu, click Check Alarm Information.  
You are now prompted to enter the passcode.

This must be the same passcode that you used to login in to the system.

Then press Receive Data to see the most up to date alarm information.

You can then select to print this information or save it to an excel file.



### 9.1 Low Temp Alarm

You can set a low temperature alarm in to the system. Should any thermostat on the system drop below this temperature an alarm will be triggered.

To set a "Low Temp Alarm", follow the steps below.

From the Alarm Menu, press Low Temp Alarm. You can now set the Low Temperature Alarm setting.

When you are happy with the setting, click Turn On to enable this feature.

### 9.2 Delete Alarm History

To delete the alarm history, select this option. You will be prompted to confirm that you wish to perform this operation.

#### All Thermostat List

This feature allows you to view, export or print a complete list of all the thermostats on the system. All thermostats in all groups will be included in this list.

#### Current View Thermostat List

This feature allows you to view, export, print a list of the thermostats currently on view on the main screen.

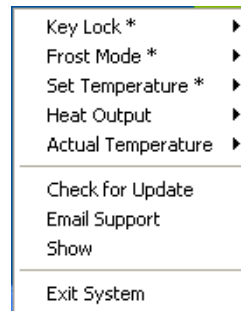
## 10. Right Click Menu

When PCLink is minimised, clicking the Toolbar icon will present you with additional functions.

Keylock: Here you can lock individual or all thermostats

Frost Mode: Here you can send individual or all thermostats into frost mode

Set Temperature: Here you can set the temperature for individual thermostats



Heat Output: Here you can view the Heat Output status for each thermostat

Actual Temperature: Here you can view the Actual temperature for each thermostat

## 11. Equipment – Renaming / Adding a Location

When you run Network Scan, a new Location will automatically be added to the system.

Should you wish to add a new Location, you can by following these steps;

- Click Equipment
- Click Location | Zone Setup
- Click Add New Location
- Enter the title for the new Location, selecting Remote if this Location is a remote site
- Select Save

**If you are trying to add a Remote Site you need to tick the Remote Site box**

**If you have added a Remote Location, you need to read section 12.1 in this manual**

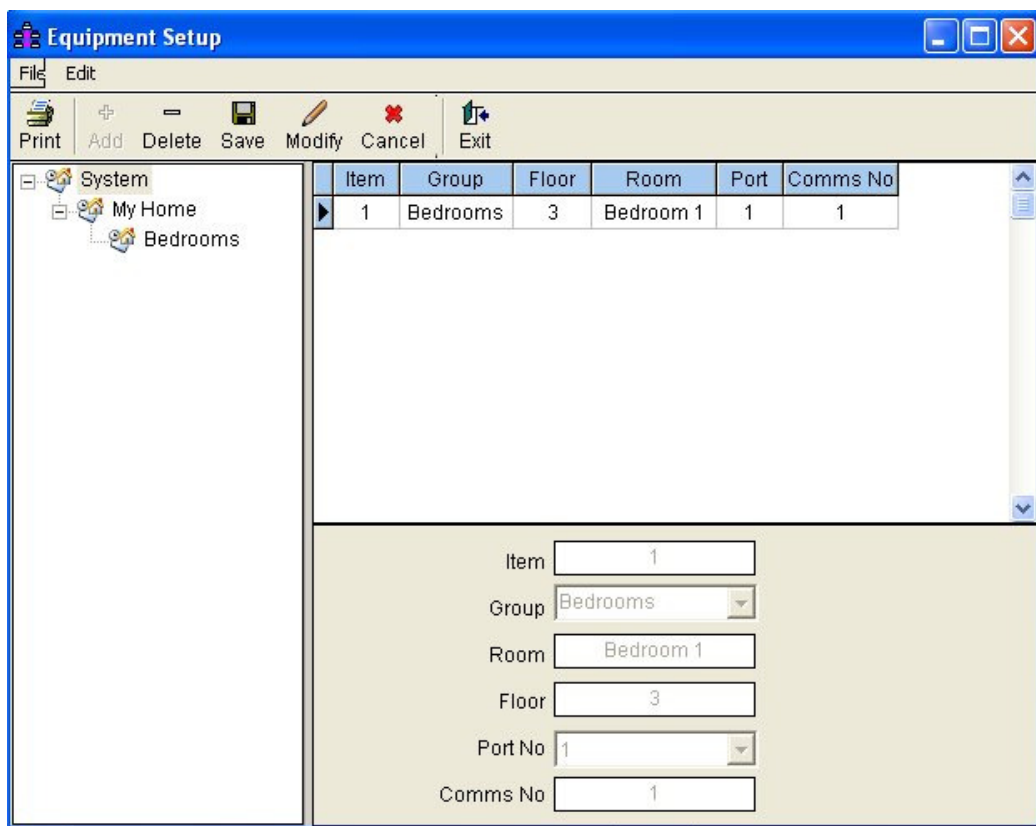
. You will need to restart PCLink to see the changes.

## 11.1 Equipment – Renaming / Adding / Deleting a Zone

- Click Equipment > Zone Setup
- Select to Modify Add or Delete a New Zone
- Select the Zone to Modify or enter the title for the new Zone
- You should now close and reload PCLink for the changes to take effect.

## 11.2 Adding a Thermostat Manually

- Select Equipment from the Menu bar
- Enter the passcode that you used when you first launched PCLink
- Now select Location | Zone from the Menu bar to add thermostats to your system.



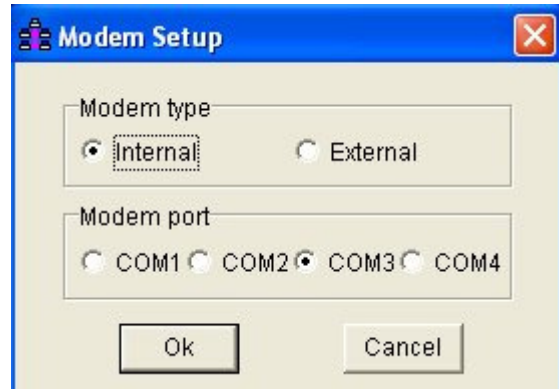
- You should highlight the zone you wish to add the new thermostat to.
- Press Add.
- You should now set the parameters for the new thermostat.

Item: This number is automatically generated by the system.  
Group: You should select which zone this thermostat should be part of  
Room: You should enter the name of this thermostat here  
Floor: You should enter the floor number for this thermostat  
Port No: You should enter the port number for this thermostat  
(This depends on the method of communication)  
Comms: You should enter the communication number for this thermostat

## 12. Modem Setup

For those connecting to a remote system by modem, you need to configure the Modem Setup.

You need to select whether your modem is an internal or external type and which port it is using.



### 12.1 Remote Site Setup

#### Setting up a Modem Site

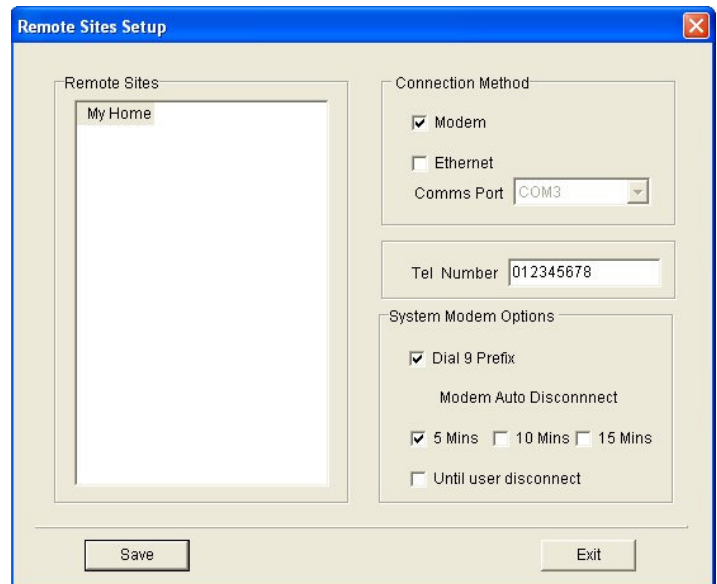
**Note: You must have at least one thermostat assigned to the Location before you can configure it.**

Highlight the Location you wish to setup.

Tick Modem and then enter the phone number of the remote location.

For those needing to dial a 9 before the dialled number, tick the 9 prefix option.

You should also set the Auto disconnect time.



### 12.2 Setting up an Ethernet Site

Highlight the Location you wish to setup as an Ethernet connection  
Tick Ethernet and then select the comms port for this connection.

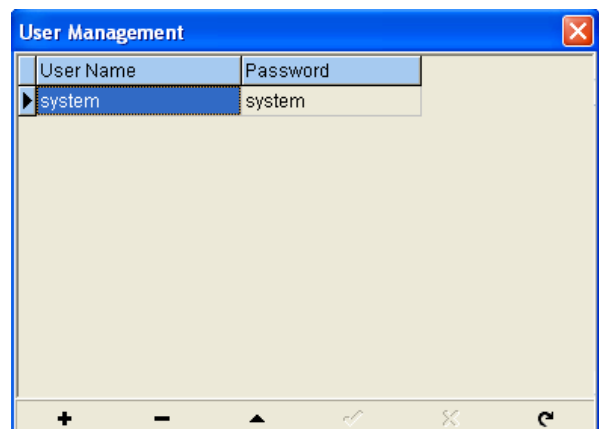
## 13. User Management

### Change Password

This facility allows you to change the password.

You will be prompted to enter your user name followed by your old password. You can then enter your new password.

We recommend that you change your password often to maintain the security of your system.

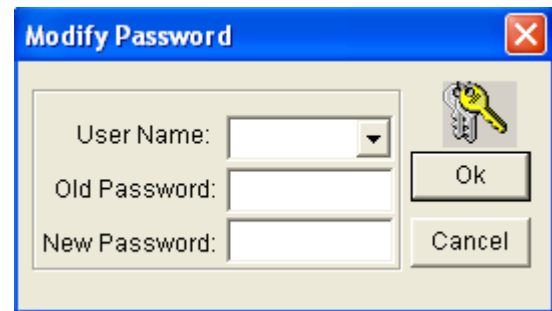


### Activate Password Lock

This feature automatically locks PCLink if it has been inactive for a specified time.

### Password Delay Setup

This feature allows you to enter the number of minutes the system should wait before activating the password lock.

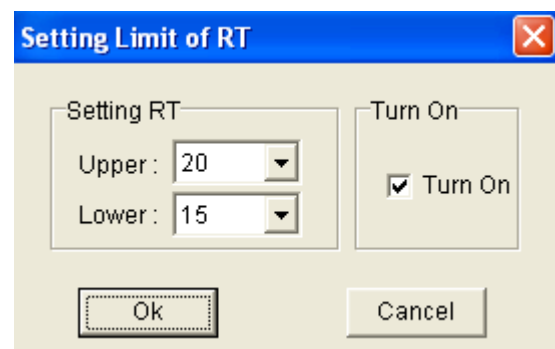


### 13.1 System Temp Limits

PCLink has a facility whereby “Low and High” temperature limits can be programmed. This feature then restricts the operator from entering a temperature set-point higher or lower than the programmed limits.

To setup these limits, click System Temp Limits

Then program the Upper and Lower limits, and when you are happy with these settings, select Turn On.



### 14. Functions; Temperature Set

Select the thermostat you wish to alter by clicking on it in the main list. Then select “Temperature Set” from the Functions list

This temperature will be maintained until the next programmed level. At this time, the thermostat will revert back to its program setting.

### 14.1 Functions; Display Status

This function allows you to turn the thermostat display on or off.

When the display is set to “Off”, the thermostat will maintain the programmed \*frost temperature and **not** the programmed comfort levels

*\*(The frost mode function must be enabled on the thermostat before this function will operate. You should consult the thermostat manual for more information)*

### 14.2 Functions; Frost Mode

Each thermostat can be programmed with a frost protection temperature. This can be set from 07-17C, the factory default being 12C. Turning the Frost Mode to “On” means the thermostat will maintain the frost protection temperature, and will not follow the programmed comfort levels. You would use this function whilst you are on holiday as it saves altering the comfort level settings. During normal operation, the frost mode should be set to “Off”

### 14.3 Functions; Keylock

The keylock function allows you to lock the keypad on the thermostat. You can continue to operate the thermostat via the PC whilst the keylock function is enabled.

## 15. Programming the Heating Levels

### Programming Heating Levels

Select the thermostat you wish to program by clicking on it in the list.

Then select “Weekday”

You are now able to enter the 4 comfort levels for the weekday.

Heating Levels

Weekday

Weekend

Send

Level1	00 ▾	:	00 ▾	SetPoint	05 ▾
Level2	00 ▾	:	00 ▾	SetPoint	05 ▾
Level3	00 ▾	:	00 ▾	SetPoint	05 ▾
Level4	00 ▾	:	00 ▾	SetPoint	05 ▾

You should think of these settings as a wake, leave for work, return home and sleep setting.

Press Send to send them to the thermostat. A confirmation box with confirm they have been sent.

Press “Weekend” and repeat to program the Weekend settings.

### 15.1 Programming the Hot Water Levels

Select the PRT/HW thermostat you wish to program in the list.

Select "Weekday" HW Timings"

You are now able to enter the 4 switching levels for the weekday.

So for example,

07.00 - 09.00  
13.00 - 15.00  
20.00 - 22.00  
--.-- - --.--

HW Timings			
Weekday	Weekend	Send	
On 10 : 00		Off 11 : 00	
On 12 : 00		Off 13 : 00	
On 14 : 00		Off 16 : 00	
On 18 : 00		Off 20 : 00	

(For any unused periods, leave them at --.--)

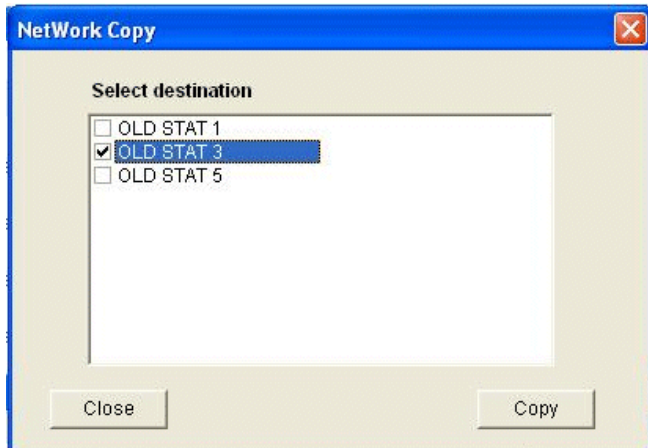
Press "Weekend" and repeat this operation to program the "Weekend HW levels"

### Copy Feature

PCLink offers a copy feature, allowing you to copy the times from the selected thermostat to one or more thermostats.

To do this, select the thermostat to copy from and then press Copy.

You are then presented with this box. Select the thermostats that should receive the new data and then press Copy.



Heatmiser UK  
Primrose House  
Primrose Street  
DARWEN  
Lancashire  
UK  
BB3 2DE  
[www.heatmiser.co.uk](http://www.heatmiser.co.uk)