

Heatmiser Plusnet v1.00

User Instructions

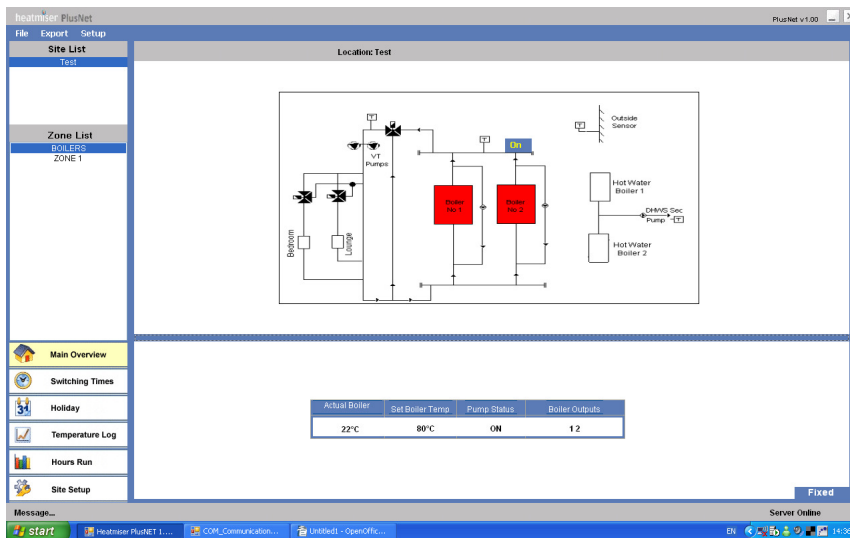
Rev 1: Jan 2009

Table of Contents

Description	Page Number
Selecting the Site and Zone you wish to view	3
Programming the Comfort Levels / Switching Times	4
Copy Function	5
Override Function	5
Holiday Function	6
Temperature Log	6
Hours Run	7
Exporting Hours Run/Log Data	7
Setting the System Frost	8
Setting up Systems Users	8

Site List / Zone List

To the left side of the screen is the Site and Zone Zone List. From here, you can select which site you want to connect to and which zone you want to view. When you click on the site, you will see the site drawing appear along with the sensor and relay indications relevant for the selected zone.



Main Overview

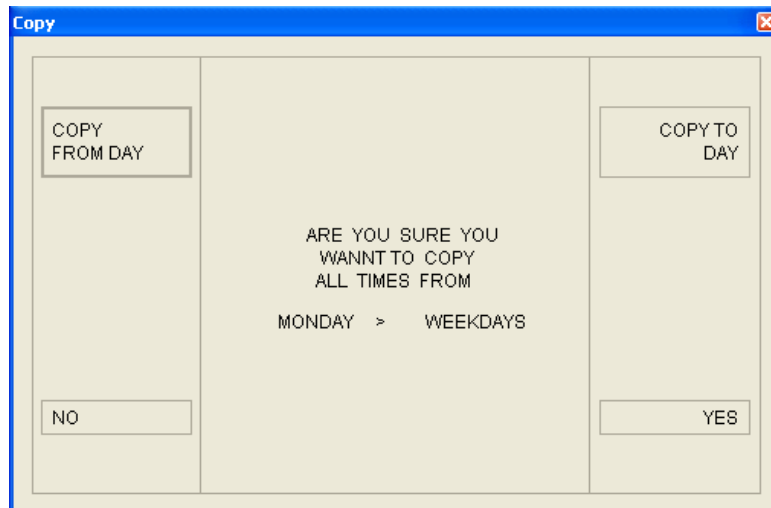
PlusNet automatically adjusts the Main Overview display depending on the configuration of the zone being viewed. As an example, the picture shown below shows a typical layout.

Actual Boiler	Set Boiler Temp	Pump Status	Boiler Outputs
22°C	80°C	ON	1 2

Copy

Plusnet enables to you copy comfort levels from one day to another. To use the Copy function, repeatedly press the COPY FROM DAY until the day you want to copy **from** is shown. Then repeatedly press the COPY TO DAY until the day you want to copy **to** is shown. Note, you can also select to copy to all weekdays or to all days.

When you are happy with the setting, press Yes to copy the data.



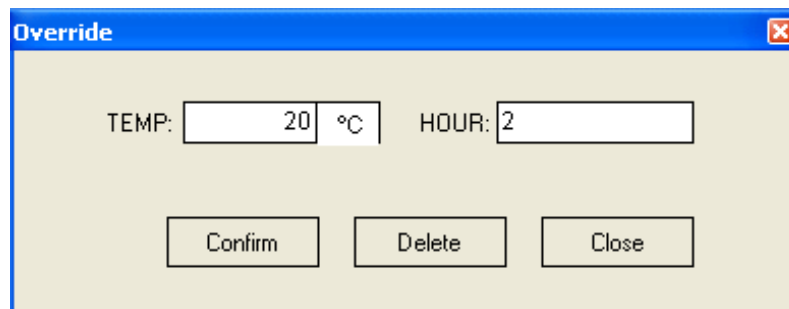
Send

Once you have made the necessary adjustments, you must press Send in order to update the Heatmiser Plus.

Override / Hold Function

Plusnet allows you to override each zone. For zones with comfort levels, you can set a desired temperature and override time. For timer zones, you can enter the override time.

- Highlight the zone by clicking on the zone name
- Right click the zone name
- Click Override
- You can now enter the override duration and temperature. (For timer zones, you will be prompted to enter an override duration only)
- Press Confirm



Holiday

The Heatmiser Plus offers 5 holiday periods. During a holiday condition, the Plus will maintain the System Frost Temperature which can be adjusted from Plusnet (see page 08)

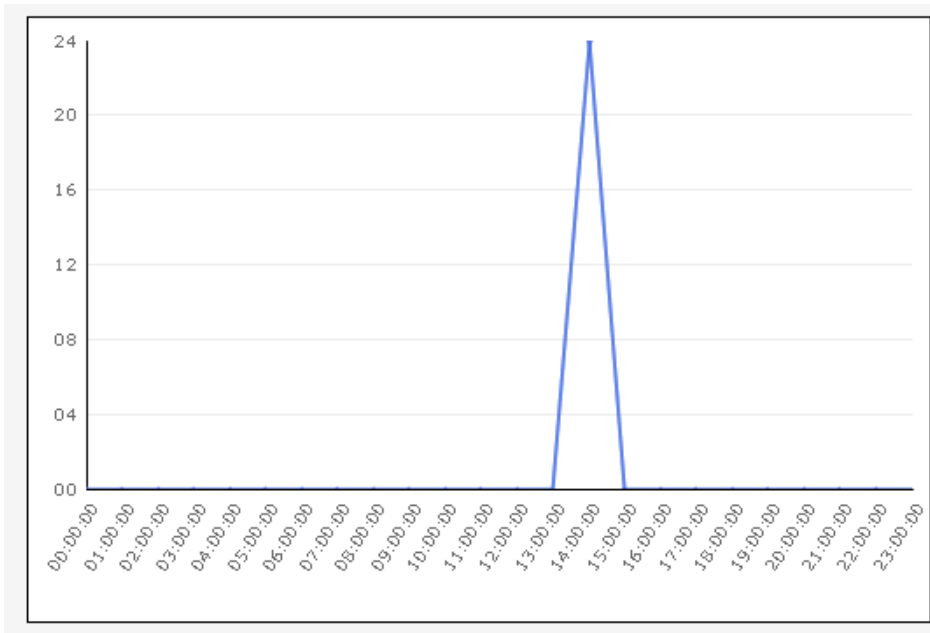
- To adjust the holiday setting, use the calendar to select the start date and then enter the number of days for the holiday.
- Press Send to send the new settings to the Heatmiser Plus

The screenshot shows the 'Holiday' configuration screen. At the top, there are five tabs labeled 'Period 1' through 'Period 5'. Below the tabs, the 'Start Date' is set to '02-07-2008' and the number of 'Day' is set to '0'. A calendar for July 2008 is displayed, with the date '2' (Wednesday) highlighted in red. Below the calendar, a red box highlights the text 'Today: 02/07/2008'.

Mon	Tue	Wed	Thu	Fri	Sat	Sun
30	1	2	3	4	5	6
7	8	9	10	11	12	13
14	15	16	17	18	19	20
21	22	23	24	25	26	27
28	29	30	31	1	2	3
4	5	6	7	8	9	10

Temperature Log

The Plusnet server stores the temperature log for the past 1 year. The past 7 days can be viewed quickly via the Plusnet interface in the form of a line chart. This function allows you to quickly determine which zones are using more energy, therefore helping you to reduce your overall energy consumption.



Hours Run

The Heatmiser Plus stores the Hours Run for the past 3 weeks. This information is displayed as a bar graph, and like the temperature log, helps you determine areas of high energy usage.

Site Setup

This option is available to the System Administrator only (See Setup Manual for details)

File Menu

Print – This menu allows you to print the temperature and hours run graph.

Backup Database – This backup utility allows you to make a backup of all sites stored in the database. We suggest that you run this backup after a new site has been added to the system.

Upgrade Database – This upgrade utility allows you to restore the database from the backup.

Export Menu

Export Hours Run

This option allows you to export the hours run data in csv format.

Export Temperature Log

A temperature export function is available. This function allows you to export the temperature history for a selected date range and then use MS Excel to create a line graph showing the history over an extended duration. To export the temperature log, follow the steps below.

- Press Export
- Select Temperature Log and then select the zone you wish to export
- On the calendar, select the From date
- On the calendar, select the To date

- Choose the export path and enter a file name for the file to be exported
- Press Export

When you import into MS Excel, you need to select Comma Delimited as an import option.

Setup Menu (Administrator Only)

System Frost The system frost temperature setting is a global setback temperature and is used to maintain a temperature during a holiday period. The system frost temperature can be set from 00 – 35C

User Setup This option allows you to add new users to the system, and provides the ability to assign access rights to each user.

New user with “User” Rights = Is allowed to view and edit zone switching times / override zone set temperature and view history data but is not allowed to add or remove sites from the system.

New user with “Admin Rights” = Has full access to the system including site configuration.