

Heatmiser Plusnet v1.00

Installation & Setup Guide

Contents Page

Connection Methods	3
USB Adaptor Setup	3
Ethernet Adaptor Setup	3-4
Installing the Server	5-6
Configuring the Firewall	6
Installing the Client	6
Configuring the Server	6
Configuring the Client	7
Adding a new Site	7
Complete Database Backup	7
Restoring the Database	8
Control Configuration Backup	8
Control Configuration Restore	8
Wiring Instructions	9

Step 1 – Deciding on the Connection Method

There are two methods of connecting the Heatmiser Plus control to Plusnet.

The first method is via USB and the second method is via ethernet.

USB – Select USB if you want to connect the Heatmiser Plus direct to one PC.

Ethernet – Select Ethernet if you want to connect to the Heatmiser Plus from several PCs over a local area network or the internet.

Limitations

You are able to connect up to 32 Plus controls to 1 USB 2201D adaptor

You are able to connect up to 32 Plus controls to 1 NC601

You can have up to 200 sites within Plusnet

Step 2 – Adaptor Setup

USB – When you connect the adaptor to your PC you will be prompted for the USB driver. This is located on the Plusnet CD

NC601 Adaptor - The NC Adaptor has several important settings that should be configured to ensure reliable operation of the system.

To configure the NC601 you first need to connect to it.

- Select Run from the Start Menu.
- Type telnet 192.168.0.233 (This is the default of the NC601)
- Press Enter

Note: If you cannot telnet the NC601 adaptor, you should ensure your PC is in the same range as the NC601 adaptor otherwise you will be unable to connect to it.

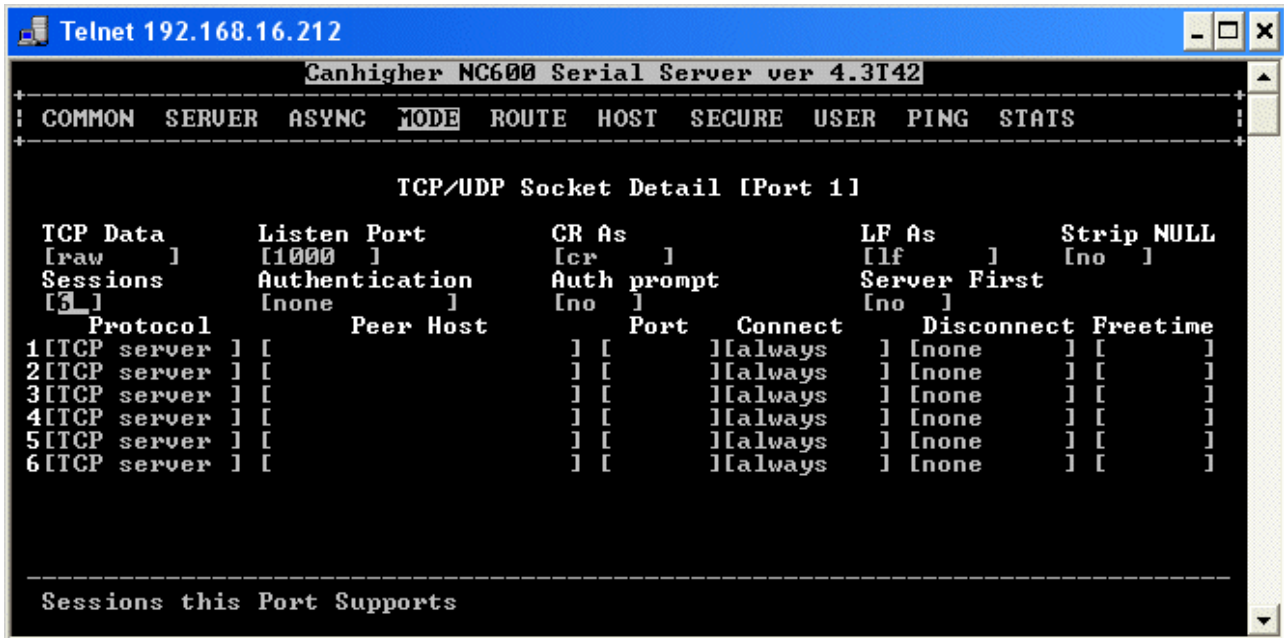
Using your cursor, move to Server and press Enter. You should now set the setting

- Set Enable DHCP to Yes
- Press Esc

Using your cursor, move to Async and press Enter. You should now set the setting

- Set the Baud rate to 19200
- Set Data to 8
- Stop to 1
- Parity to n
- Flowcontrol to None
- Type RS485 Half
- Move to ... under Advance and press Enter
- You should then check that the TX Timeout and Keep Alive is set to 60
- Press Escape to return back to the main menu
- Move the cursor to Mode and press Enter
- Set Listen Port to 1000

- Set Sessions to 6
- Press Escape
- Move to Common and Press Enter
- Select Save Configuration and then Reboot the NC601



To change the IP Address of the NC601, follow these steps.

- Select Start>Run
- Type telnet 192.168.0.233
- Select Server
- Select IP Address and change to the required IP address

- Select Common, Save Configuration and then Reboot the NC601

Step 3 – The Installation Method

Plusnet is based on a Server / Client setup and uses the MySQL database structure.

The Plusnet Server application should ideally be installed on a Windows Server so the database can be shared with multiple Plusnet Clients. If no Server is available, you can install the Plusnet server on a Windows workstation but the workstation must be powered on and the Server application running in order for the system to operate.

The Plusnet Client application should be installed on each Workstation to be used to connect to the Plusnet system. The Plusnet Client can operate on the same PC as the Plusnet Server.

During the installation, .NET will be downloaded and installed if required.

Server Setup

- Select the PC where you want to install the Plusnet Server
- Insert the Plusnet CD
- The CD should autorun. If it doesn't, you should navigate to your CD drive in Windows Explorer and run the setup.exe file
- The installation wizard will present a Install Menu, you should run through each install step in order.

Step 1 – INSTALL MYSQL

- Click the Install Mysql button
- Mysql will now begin to install on your PC. You should accept all default settings, pressing “next” whenever prompted.
- After Mysql has installed, you will be prompted to run the configuration wizard. Again, you should accept all default settings.
- You will then be prompted to enter a username and passcode. You should make a note of these settings as they will be required later in the setup process.
- Press Execute - You should see that all steps have completed successfully.

Step 2 – INSTALL MYSQL DRIVERS

- Click the install MYSQL DRIVERS button
- The MYSQL Drivers will now be installed on your system. You should accept the standard defaults.

Step 3 – INSTALL PLUSNET DATABASE

- Click the Install Plusnet Database
- You now need to select the path for the database to be stored. This should be the “Data” folder within the Mysql folder.
- If you have used the default installation path during installation of Mysql, then the path would be C:\Program Files\MySQL\MySQL Server 6.0\data
- A new database will be created

Step 4 – INSTALL PLUSNET SERVER

- Click the Install Plusnet Server button to install the server application.
- If .NET 2.0 is not present on the PC it will be installed.

Firewall Settings

You now need to add the Heatmiser Server to your Firewall exception list. If you don't do this, you will be unable to connect to the server from remote clients.

To do this, do the following

1. Go into Control Panel and select Firewall.
2. Click Exception
3. Click Add Program
4. Select Browse and browse to Program Files>Heatmiser>Heatmiser Server or the installation path of the server if changed.
5. Select Heatmiser Server
6. Repeat and add Heatmiser Server 1
7. Select OK and Close

Client Setup

- Select the PC where you want to install the Plusnet Client
- Insert the Plusnet CD
- Select the Client Install Wizard
- The CD should autorun. If it doesn't, you should navigate to your CD drive in Windows Explorer and run the setup.exe file
- The installation wizard will check to see if .Net is installed. If not, it will install it.
- The installation wizard will then continue to install the Plusnet Client application

Server Configuration

- Run the Plusnet Server
- Press "Settings"
- Enter the Server Address
- Enter the Mysql Login and Password (from when you installed MySql)
- Enter the Database Name (default is plusnet)
- Browse to select the Database path.
- Enter the Port Number (Default 3306)
- Press "Connection Test"
- If the connection is successful, you can press "Settings" again to accept and then press minimise.
- The Server is now running
- If the connection failed, you should re-check the settings.

DataBase Configuration

H

Server :	<input type="text" value="localhost"/>	Database Name :	<input type="text" value="plusnet"/>
Login :	<input type="text" value="root"/>	Password :	<input type="text" value="a"/>
Database Path :	<input type="text" value="C:\Program Files\MySQL\MySQL Server 6.0\data\plu"/> ...		
Port :	<input type="text" value="3306"/>	<input type="button" value="Connect test"/>	

Server IP Address

To find out the IP address of the server, go to the PC with the server installed and do the following;

- Press Start
- Select Run
- Type CMD
- Type IpConfig

Client Configuration

- Run the Plusnet Client
- Press Settings
- Enter the IP Address of the Server
- Press "Connection Test"
- If the connection was unsuccessful, recheck the Server IP Address and check that the server is running.
- The default username and password for Plusnet is "Admin"

Complete Database Backup

We recommend you run the database backup utility prior to adding a new site. This will allow you to recover your system should something go wrong.

To do this, select File>Backup Database

This will create a complete backup of your system.

This file is saved to the PC running the Server. The file is located within the backup folder within the Plusnet Server installation folder. The default path is C:\Program Files\Heatmiser\Plusnet Server\Backup

The file title is based on the date and time the file was created. So, for example a backup at 17:07 on the 7 April 2009 will be called 0904070507

Restoring or Moving the Database

If you need to restore or move the Server to a different PC, follow these steps

- Backup the database and copy the file to a known location
- Install Plusnet Server on a new machine
- Copy the saved backup into the Backup folder within the Plusnet Server Installation Folder
- From the Plusnet Client, click File>Upgrade Database
- Select the file to upgrade from
- The upgrade process should import the data

Restoring the configuration for a Heatmiser Plus

Plusnet has the ability to backup and restore the configuration for each control, providing an easy way to recover the system should the need arise.

To backup the configuration, follow these steps.

- Select the site you wish to backup
- Right click and press Site Config Backup
- The control configuration is now saved

To restore the configuration, follow these steps.

- Select the site you wish to restore
- Right click and press Site Config Restore
- Plusnet will send the saved configuration to the control

Step 4 - Adding a new Site

To add a new site into Plusnet, follow the steps below.

- Right click in the Site List Menu
- Select Add Site
- Enter the Site Name and Site Address
- Select whether this site will be connected by USB or Ethernet
- Select Next

USB Connection

- Select the adaptor from the list to be used for this new site
- Select Next
- Plusnet will then scan the port and will display how many Plus controls have been found.
- You can now press Browse to select the picture for each Plus control found.
- Select OK and Import
- Select Finish

Ethernet Site

- Enter the IP address of the site
- Enter the device port number (Default 1000)
- Press Next
- Plusnet will then scan the port and will display how many Plus controls have been found.
- Press Next
- Select OK and Import
- Select Finish

For operational instructions, please consult the User Instruction Manual

Wiring the Heatmiser Senior/Plus to the Jara 2201D

- Locate the Network Connection on the Heatmiser control. This is located at the bottom left of the Heatmiser PCB marked with A and B terminals.
- If you have multiple Plus/Senior, daisychain all A and B connections
- On the Jara 2201D, locate the 485 port. You will see A and B connections
- Connect the A from the Heatmiser to the A on the 2201D
- Connect the B from the Heatmiser to the B on the 2001D

Wiring the Heatmiser Senior/Plus to the NC 601

- Locate the Network Connection on the Heatmiser control. This is located at the bottom left of the Heatmiser PCB marked with A and B terminals.
- If you have multiple Plus/Senior, daisychain all A and B connections
- On the NC 601. You will see R+ and T-B connections
- Connect the A from the Heatmiser to the R+ on the NC601
- Connect the B from the Heatmiser to the T-B on the NC601